

SELF-CONTRACTED CURVES HAVE FINITE LENGTH

EUGENE STEPANOV AND YANA TEPLITSKAYA

ABSTRACT. A curve $\theta: I \rightarrow E$ in a metric space E equipped with the distance d , where $I \subset \mathbb{R}$ is a (possibly unbounded) interval, is called self-contracted, if for any triple of instances of time $\{t_i\}_{i=1}^3 \subset I$ with $t_1 \leq t_2 \leq t_3$ one has $d(\theta(t_3), \theta(t_2)) \leq d(\theta(t_3), \theta(t_1))$. We prove that if E is a finite-dimensional normed space with an arbitrary norm, the trace of θ is bounded, then θ has finite length, i.e. is rectifiable, thus answering positively the question raised in [4].

1. INTRODUCTION

Let E be a metric space equipped with the distance d . A curve $\theta: I \rightarrow E$, where $I \subset \mathbb{R}$ is an (possibly unbounded) interval, is called self-contracted, if for any triple of instances of time $\{t_i\}_{i=1}^3 \subset I$ with $t_1 \leq t_2 \leq t_3$ one has $d(\theta(t_3), \theta(t_2)) \leq d(\theta(t_3), \theta(t_1))$. Of particular interest are continuous self-contracted curves in a finite-dimensional space \mathbb{R}^n equipped with some norm. In [3] and [5] it has been shown that such curves arise as steepest decent curves for convex and level set convex (sometimes called also quasi-convex) functions in the Euclidean space. In [3] it has been proven that every self-contracted curve in a bounded subset of \mathbb{R}^2 (equipped with the usual Euclidean distance) necessarily has finite length, i.e. is *rectifiable*. This result has been further extended to \mathbb{R}^n with arbitrary $n \geq 1$, again equipped with Euclidean norm, in [1] (and, independently, in [5] for continuous self-contracted curves) and to an arbitrary finite-dimensional Riemannian manifold in [2]. Note that the self-contracted property is quite sensible to the change of the distance and even of the norm in \mathbb{R}^n , namely, it is easy to provide examples of curves self-contracted with respect to some norm and not self-contracted with respect to an equivalent one: for instance, a curve moving along three consecutive sides of the square $[0, 1]^2$ (say, clockwise, from the origin to $(0, 1)$, then to $(1, 1)$ and finally to $(1, 0)$) is self-contracted with respect to the maximum (i.e. ℓ_2^∞) norm in \mathbb{R}^2 , but not with respect to the Euclidean one. This raises the natural question whether it can be extended to self-contracted curves in \mathbb{R}^n equipped with an arbitrary norm. This question has been posed in [4], and in the same paper a partial answer for uniformly convex smooth (C^2) norms has been given for the case $n = 2$. Here we give a positive answer for the case of a generic norm in \mathbb{R}^n , $n \geq 1$, not necessarily smooth.

As opposed to [3, 1] (and to [4] which substantially extends the technique of [1]), where the proofs are based on finite “continuous” analysis arguments fundamentally relying on [6], our technique has some “discrete” flavor. Namely, we first provide an estimate on self-contracted polygonal lines identified by the ordered set $(A_1, \dots, A_r) \in E^r$ of their vertices (of course, the

1991 *Mathematics Subject Classification*. Primary 53A04, 52A21; Secondary 37N40, 49J52, 49J53, 65K10.

The work of the first author has been partially financed by RFBR grant #17-01-00678 and by the Russian government grant #074-U01, the Ministry of Education and Science of Russian Federation project #14.Z50.31.0031. The second author also acknowledges the support of the St. Petersburg State University grant #6.37.208.2016 as well as of the social investment program “Native towns”, of the PJSC “Gazprom Neft”.

use of the term “polygonal line” outside of a context of a linear vector space is an abuse of the language). Namely, a vector of $(A_1, \dots, A_r) \in E^r$ will be called *self-contracted* with respect to the distance d (or with respect to the norm $\|\cdot\|$, if d is coming from some norm $\|\cdot\|$), if $d(A_k, A_j) \leq d(A_k, A_i)$ whenever $i \leq j \leq k$. We show that if E is a finite-dimensional normed space, then the total Euclidean length of the self-contracted polygonal line is estimated by the Euclidean distance between its first and last vertex. This immediately proves the desired result for self-contracted curves. The proof of the estimate of the length of self-contracted polygonal lines is more or less discrete in nature and uses a specially tailored induction together with some combinatorial type arguments on particular arrangements of sets of vertices.

2. NOTATION AND PRELIMINARIES

For $\{A, B\} \subset \mathbb{R}^n$ we denote by (AB) the unique line defined by these points (of course, when they are distinct), by $[AB]$ the closed line segment with endpoints A and B , by $|AB|$ its Euclidean length. The notation $|\cdot|$ will always stand for the Euclidean norm in \mathbb{R}^n , and $a \cdot b$ will stand for the standard scalar product between $a \in \mathbb{R}^n$ and $b \in \mathbb{R}^n$. For two vectors $\{\nu_1, \nu_2\} \subset \mathbb{R}^n$ we denote by $\widehat{(\nu_1, \nu_2)}$ the angle between them, so that $\widehat{(\nu_1, \nu_2)} \in [0, \pi]$. If $\ell \subset \mathbb{R}^n$ is a line and $\Pi \subset \mathbb{R}^n$ is a linear subspace of arbitrary positive dimension, we denote by $\widehat{(\ell, \Pi)}$ the angle between them (i.e. the minimum angle between vectors belonging to ℓ and Π respectively), so that $\widehat{(\ell, \Pi)} \in [0, \pi/2]$. The angle at vertex B of a triangle with vertices A, B, C will be denoted by $\angle ABC$. For a $\mathbb{D} \subset \mathbb{R}^n$ we denote by $\partial\mathbb{D}$ its topological boundary and by $\text{diam } \mathbb{D}$ its Euclidean diameter (i.e. the diameter with respect to the Euclidean distance). For $\{a, b\} \in \mathbb{R}$ we write $a \vee b := \max\{a, b\}$.

The notation ν^\perp for a $\nu \in \mathbb{R}^n$, unless otherwise explicitly defined, will stand for the linear subspace $\{v \in \mathbb{R}^n : v \cdot \nu = 0\}$, and Π^\perp for a linear subspace $\Pi \subset \mathbb{R}^n$ will stand for its orthogonal complement.

Fixed an $\varepsilon > 0$, we call a segment $[AB]$ ε -horizontal with respect to the linear subspace $\Pi \subset \mathbb{R}^n$ of arbitrary positive dimension, if $\widehat{((AB), \Pi)} \leq \varepsilon$, and ε -vertical with respect to this subspace otherwise (we will abbreviate both notions to just *horizontal* or *vertical* respectively, if both the subspace and ε are clear from the context). We use this notion in particular when the subspace Π is one-dimensional and coincides with some axis x^j of some chosen coordinate system (the axis is seen as just a line, i.e. ignoring its direction). By p_Π we denote the orthogonal projection onto Π .

If E is an arbitrary set, and $(A_1, \dots, A_r) \in E^r$ is an arbitrary vector of points of E , then a vector $(A_{j_1}, \dots, A_{j_k}) \in E^k$ with $1 \leq j_1 < j_2 < \dots < j_k \leq r$, will be called subvector of (A_1, \dots, A_r) , denoted by $(A_{j_1}, \dots, A_{j_k}) \subset (A_1, \dots, A_r)$. If necessary, we identify the vector $(A_1, \dots, A_r) \in E^r$ with the set $\{A_1, \dots, A_r\}$, so that we write just $(A_1, \dots, A_r) \subset E$. In case $E = \mathbb{R}^n$, we call the *variation* of $(A_1, \dots, A_r) \in E^r$ (denoted by $\ell(A_1, \dots, A_r)$) the Euclidean length of the the polygonal line $A_1 \dots A_r := \cup_{j=1}^{r-1} [A_j A_{j+1}]$ i.e.

$$\ell(A_1, \dots, A_r) := \sum_{i=1}^{r-1} |A_i A_{i+1}|.$$

Further, for a linear subspace $\Pi \subset \mathbb{R}^n$ of arbitrary positive dimension we define the variation of (A_1, \dots, A_r) along Π by

$$\ell_\Pi(A_1, \dots, A_r) := \ell(p_\Pi(A_1), \dots, p_\Pi(A_r)).$$

For a curve $\theta: I \rightarrow \mathbb{R}^n$, where $I \subset \mathbb{R}$ is an interval (not necessarily finite), we denote by $\ell(\theta)$ its parametric length defined by the usual formula

$$\ell(\theta) := \sup \left\{ \ell \left(\left\{ \theta(t_j) \right\}_{j=1}^m \right) : \left\{ t_j \right\}_{j=1}^m \subset I, m \in \mathbb{N} \right\}.$$

3. MAIN RESULTS

The following theorem is the first main result of this paper.

Theorem 3.1. *Let $A_i \in \mathbb{R}^n$, $i = 1, \dots, r$, and the vector (A_1, \dots, A_r) is self-contracted with respect to the norm $\|\cdot\|$, then*

$$\ell(A_1, \dots, A_r) \leq C|A_1 A_r|$$

for some $C > 0$ depending only on $\|\cdot\|$ and on the space dimension n .

An immediate consequence of the above result is the following theorem on self-contracted curves giving the complete answer to the question posed in the Introduction.

Theorem 3.2. *Let E be a finite-dimensional space equipped with the norm $\|\cdot\|$, and let $\theta: I \rightarrow E$, where $I \subset \mathbb{R}$ is a (possibly unbounded) interval, be a self-contracted curve with trace in a bounded set $\mathbb{D} \subset E$. Then $\ell(\theta) \leq C \text{diam } \mathbb{D}$ for some $C > 0$ depending only on $\|\cdot\|$ and on the space dimension n .*

Proof. Consider an arbitrary finite set $\{t_i\}_{i=1}^r \subset I$, $t_i \leq t_{i+1}$. We have now that for $A_i := \theta(t_i)$ the vector (A_1, \dots, A_r) is self-contracted in E . Thus

$$\ell(A_1, \dots, A_r) \leq C|A_1 A_r| \leq C \text{diam } \mathbb{D}$$

by Theorem 3.1, concluding the proof. □

Remark 3.3. The proofs of the above Theorems 3.1 and 3.2 never use essentially the symmetry of the norm $\|\cdot\|$. If the norm is not symmetric (i.e. not necessarily satisfying the assumption $\| -x \| = \|x\|$ for all $x \in E$), with the distance (now not necessarily symmetric anymore) defined still by $d(x, y) := \|y - x\|$, then the geometric meaning of the self-contracted property of the curve does not change with respect to the standard situation of a symmetric norm, that is, for every triple of instances of time $\{t_i\}_{i=1}^3 \subset I$ with $t_1 \leq t_2 \leq t_3$ and $\theta(t_1)$ on the boundary of a ball of the norm (now a generic, not necessarily symmetric bounded convex absorbing set) centered at $\theta(t_3)$ one has that $\theta(t_2)$ cannot be strictly outside of the latter ball. Then using Lemma A.2 one has to change its claim as described in Remark A.3. This would change the constant 3/4 in the claim of Lemma 5.10 and hence also the explicit constants in all the subsequent lemmata have to be substituted by constants dependent only on the norm $\|\cdot\|$, but all the respective results will remain true up to such modification of constants. Thus both Theorem 3.1 and Theorem 3.2 are in fact true for possibly not symmetric norms.

Remark 3.4. It is important to note that not every self-contracted curve with bounded trace in a finite-dimensional normed space is continuous. In fact, the easy example $\theta: [0, 1] \rightarrow \mathbb{R}$ defined by $\theta(t) := 0$ for $t \in [0, 1/2)$ and $\theta(t) := 1$ for $t \in [1/2, 1]$ provides a discontinuous self-contracted curve even in \mathbb{R} .

The example below shows that no similar result can be expected in an infinite-dimensional situation (even in an infinite-dimensional Hilbert space instead of the Euclidean one).

Example 3.5. Let ℓ^2 stand for the standard Hilbert space of square summable sequences equipped with its usual norm $\|\cdot\|_2$, $\{e_k\}_{k=1}^\infty$ standing for its usual orthonormal basis. Then the curve $\theta: [0, +\infty) \rightarrow \ell^2$ defined by

$$\theta(t) := \begin{cases} 0, & t \in [0, 1), \\ \sum_{j=1}^{k-1} \frac{1}{j} e_j, & t \in [k-1, k), \quad k \in \mathbb{N}, k \geq 2, \end{cases}$$

is self-contracted because

$$\|\theta(k), \theta(l)\|_2^2 = \sum_{j=l}^{k-1} \frac{1}{j^2} > \sum_{j=m}^{k-1} \frac{1}{j^2} = \|\theta(k), \theta(m)\|_2^2$$

when $l < m < k$, $\{l, m, k\} \subset \mathbb{N}$, and its trace belongs even to a compact subset of ℓ^2 (the Hilbert cube), but $\ell(\theta) \geq \sum_{k=1}^\infty 1/k = +\infty$. The same curve restricted to every finite interval of time, say, $[0, n]$, $n \in \mathbb{N}$, provides an example of a self-contracted curve in a bounded subset of the Euclidean space \mathbb{R}^n , for which the constant C in Theorem 3.2 tends to infinity as $n \rightarrow +\infty$. The same example can be also easily interpreted in the language of self-contracted polygonal lines rather than curves. It is also an easy exercise to transform this example in the one with continuous self-contracted curves.

It is worth providing also another simple though instructive example.

Example 3.6. Let $L^2(0, 1)$ stand for the standard Lebesgue space of square integrable functions over $(0, 1)$ equipped with its usual norm still denoted $\|\cdot\|_2$ (there is obviously no confusion with the previous example, though the notation for the norm is the same), and the curve $\theta: [0, 1] \rightarrow L^2(0, 1)$ be defined by $\theta(t) := \mathbf{1}_{[0, t]}$, the characteristic function of the interval $[0, t]$, $t \in [0, 1]$. It is obviously self-contracted because $\|\theta(t) - \theta(s)\|_2 = |t - s|^{1/2}$, and the same relationship shows that it is not rectifiable, though its image is a compact set (as a continuous image of $[0, 1]$). Note that this is nothing but a standard construction of the isometric embedding into $L^2(0, 1)$ of the ‘‘snowflake’’ space $[0, 1]$ equipped with the distance $d(t, s) := |t - s|^{1/2}$.

The rest of the paper will be dedicated to the proof of Theorem 3.1, first in an easy particular case and then in the general situation.

4. THE HEART OF THE PROOF: AN EASY CASE

Before presenting the quite lengthy and technical proof of Theorem 3.1 in its full generality, we provide here for the readers’ convenience its extremely simple version for a particular situation of the two-dimensional space \mathbb{R}^2 equipped with the maximum norm $\|(x_1, x_2)\|_\infty := |x_1| \vee |x_2|$, so that its closed unit ball \mathbb{B} is the square $[-1, 1]^2$. This proof, though quite immediate, represents the heart of our general construction, and hence hopefully simplifies the reading of the general proof. We will further comment on how the general proof is obtained from this easy particular situation.

Proof of Theorem 3.1, easy case. The ball $\mathbb{B} = [-1, 1]^2$ can be represented as the union of $N = 4$ triangles $\{\mathbb{P}_i\}_{i=1}^N$, the vertices of each of the triangles \mathbb{P}_i being the origin and two neighboring vertices of the square $[-1, 1]^2$. We assume the triangles to be intersecting each other only at the origin (so they are neither open nor closed). By scaling we may assume without loss of generality that $A_j \in \mathbb{B} + A_r$ for all $j = 1, \dots, r$. The rest of the proof is divided then in three steps.

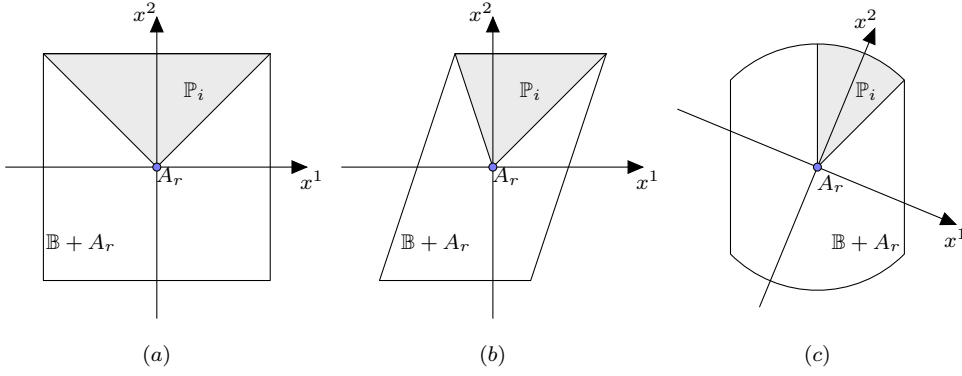


FIGURE 4.1. (a) Proof of the easy case of Theorem 3.1 ($n = 2$, maximum norm), Step 2; (b) the case $n = 2$, the unit ball is a convex polygon; (c) the case $n = 2$, generic norm.

Step 1. We claim that

$$(4.1) \quad \ell(A_1, \dots, A_r) \leq C_1 \sum_{i=1}^N \ell((A_1, \dots, A_r) \cap (\mathbb{P}_i + A_r)) + C_2 |A_1 A_r|$$

for some positive constants C_1 and C_2 . In fact, consider an arbitrary $j \in \{1, \dots, r-1\}$ such that $A_{j+1} \in \mathbb{P}_i + A_r$, but $A_j \notin \mathbb{P}_i + A_r$ for some $i = 1, \dots, N$. Then for every fixed $i \in \{1, \dots, N\}$ either

- (i) j is the first integer in $\{1, \dots, r\}$ such that $A_{j+1} \in \mathbb{P}_i + A_r$, i.e. $\{s \in \{1, \dots, j\} : A_s \in \mathbb{P}_i + A_r\} = \emptyset$. In this case, since $\{A_j, A_{j+1}\} \in \lambda \mathbb{B} + A_r$ with $\lambda := \|A_1 A_r\|$ (because (A_1, \dots, A_r) is self-contracted), then

$$|A_j A_{j+1}| \leq \sqrt{2} \|A_j A_{j+1}\| \leq 2\sqrt{2} \|A_1 A_r\| \leq 2\sqrt{2} |A_1 A_r|.$$

For each $i = 1, \dots, N$ except one (for which $A_1 \in \mathbb{P}_i + A_r$) there is clearly one and only one such j and hence the sum of Euclidean lengths of all such line segments $|A_j A_{j+1}|$ through all \mathbb{P}_i , $i = 1, \dots, N$, is estimated from above by $C_2 |A_1 A_r|$, with $C_2 := (N-1)2\sqrt{2} = 6\sqrt{2}$;

- (ii) or there is an

$$s(j) := \max\{s \in \{1, \dots, j\} : A_s \in \mathbb{P}_i + A_r\},$$

and $s(j) < j$ by the definition of $s(\cdot)$, hence

$$|A_j A_{j+1}| \leq \sqrt{2} \|A_j A_{j+1}\| \leq \sqrt{2} \|A_{s(j)} A_{j+1}\| \leq \sqrt{2} |A_{s(j)} A_{j+1}|.$$

Then with $C_2 := \sqrt{2}$ one has

$$\begin{aligned} & \sum_{\substack{j \in \{1, \dots, r-1\} \\ \{A_j, A_{j+1}\} \subset \mathbb{P}_i + A_r}} |A_j A_{j+1}| + \sum_{\substack{j \in \{1, \dots, r-1\} \\ \text{as in (ii)}}} |A_j A_{j+1}| \\ & \leq C_2 \left(\sum_{\substack{j \in \{1, \dots, r-1\} \\ \{A_j, A_{j+1}\} \subset \mathbb{P}_i + A_r}} |A_j A_{j+1}| + \sum_{\substack{j \in \{1, \dots, r-1\} \\ \text{as in (ii)}}} |A_{s(j)} A_{j+1}| \right) \\ & = C_2 \ell((A_1, \dots, A_r) \cap (\mathbb{P}_i + A_r)). \end{aligned}$$

Hence, from (i) and (ii), we get (4.1).

Step 2. Assume now that $(A_1, \dots, A_r) \subset \mathbb{P}_i + A_r$ for some $i = 1, \dots, N$, and show that

$$(4.2) \quad \ell(A_1, \dots, A_r) \leq C |A_1 A_r|$$

for some universal constant $C > 0$. We consider to this aim the system of cartesian coordinates with axes passing through A_r (considered then as the origin of the system), with the axis x^2 directed perpendicular to the side of \mathbb{P}_i coinciding with a side of the square $\partial\mathbb{B}$ (see Figure 4.1(a)), and the axis x^1 parallel to the latter side. Then

$$(4.3) \quad \ell(A_1, \dots, A_r) \leq \sum_{j=1}^{r-1} (|x_{j+1}^1 - x_j^1| + |x_{j+1}^2 - x_j^2|) = \ell_{x^1}(A_1, \dots, A_r) + \ell_{x^2}(A_1, \dots, A_r),$$

where $x_j^l := p_{x^l}(A_j)$, $l = 1, 2$, $j = 1, \dots, r$. But $x_{j+1}^2 \leq x_j^2$ for all j (because (A_1, \dots, A_r) is self-contracted and $(A_1, \dots, A_r) \subset \mathbb{P}_i + A_r$), so that

$$(4.4) \quad \ell_{x^2}(A_1, \dots, A_r) = \sum_{j=1}^{r-1} |x_{j+1}^2 - x_j^2| = - \sum_{j=1}^{r-1} (x_{j+1}^2 - x_j^2) = |x_r^2 - x_1^2|.$$

To estimate $\ell_{x^1}(A_1, \dots, A_r)$, observe that there is a subset $(A_{q_1}, \dots, A_{q_l}) \subset (A_1, \dots, A_r)$ having the same ℓ_{x^1} but with $(x_{q_j}^1 - x_{q_{j+1}}^1)(x_{q_{j-1}}^1 - x_{q_j}^1) < 0$, i.e. the projection of $(A_{q_j} A_{q_{j+1}})$ over x^1 is directed oppositely to that of $(A_{q_{j-1}} A_{q_j})$, for all $j = 2, \dots, l-1$. The respective set of indices $\Lambda := \{q_1, \dots, q_l\}$ is formed by downward induction, namely, setting $q_l := r$, $q_{l-1} := r-1$ and then for each j having determined q_j and q_{j+1} , finding the maximum index $s < j$ such that $(x_{q_j}^1 - x_{q_{j+1}}^1)(x_s^1 - x_{q_j}^1) < 0$ and setting $q_{j-1} := s$. Since clearly $\ell_{x^1}(A_{j-1}, A_j, A_{j+1}) = \ell_{x^1}(A_{j-1}, A_{j+1})$ when the projections of $(A_{j-1} A_j)$ and of $(A_j A_{j+1})$ over x^1 have the same direction, then

$$\ell_{x^1}(A_{q_1}, \dots, A_{q_l}) = \ell_{x^1}(A_1, \dots, A_r),$$

and therefore we may assume without loss of generality (up to renaming the indices) that the original vector (A_1, \dots, A_r) has the property that the projection of $(A_j A_{j+1})$ over x^1 is directed oppositely to that of $A_{j-1} A_j$, for all $j = 2, \dots, r-1$. Now, we note that

$$|x_{j+1}^1 - x_{j-1}^1| \vee |x_{j+1}^2 - x_{j-1}^2| = \|A_{j-1} A_{j+1}\| \geq \|A_j A_{j+1}\| \geq |x_{j+1}^1 - x_j^1|$$

implies that

- (i) either $|x_{j+1}^1 - x_j^1| \leq |x_{j+1}^2 - x_{j-1}^2|$ (i.e. the segment $(A_{j-1} A_{j+1})$ is ‘‘vertical’’ in the sense that its maximum norm is given by the length of its projection onto x^2),

(ii) or $|x_{j+1}^1 - x_j^1| \leq |x_{j+1}^1 - x_{j-1}^1|$ (i.e. the segment $(A_{j-1}A_{j+1})$ is “horizontal” in the sense that its maximum norm is given by the length of its projection onto x^1).

In case (ii) x_{j+1}^1 is closer to x_j^1 than to x_{j-1}^1 but lies on the same side of x_j^1 as x_{j-1}^1 , so that

$$|x_{j+1}^1 - x_j^1| \leq \frac{1}{2}|x_j^1 - x_{j-1}^1|,$$

and therefore in either of the cases

$$|x_{j+1}^1 - x_j^1| \leq \frac{1}{2}|x_j^1 - x_{j-1}^1| + |x_{j+1}^2 - x_{j-1}^2|.$$

Thus, by induction,

$$|x_{j+1}^1 - x_j^1| \leq \frac{|x_2^1 - x_1^1|}{2^{j-1}} + \frac{1}{2} \sum_{k=3}^{j+1} \frac{|x_k^2 - x_{k-2}^2|}{2^{j-k}},$$

and therefore,

$$\begin{aligned} \ell_{x^1}(A_1, \dots, A_r) &= \sum_{j=1}^{r-1} |x_{j+1}^1 - x_j^1| \leq |x_2^1 - x_1^1| \sum_{j=1}^{r-1} \frac{1}{2^{j-1}} + \frac{1}{2} \sum_{j=1}^{r-1} \sum_{k=3}^{j+1} \frac{|x_k^2 - x_{k-2}^2|}{2^{j-k}} \\ (4.5) \quad &= |x_2^1 - x_1^1| \sum_{j=1}^{r-1} \frac{1}{2^{j-1}} + \sum_{k=3}^r |x_k^2 - x_{k-2}^2| \sum_{j=k-1}^{r-1} \frac{1}{2^{j-k+1}} \\ &\leq 2|x_2^1 - x_1^1| + 2 \sum_{k=3}^r |x_k^2 - x_{k-2}^2| \leq 2|x_2^1 - x_1^1| + 2\ell_{x^2}(A_1, \dots, A_r) \\ &\leq 2|x_2^1 - x_1^1| + 2|x_1^2 - x_r^2| \quad \text{by (4.4)} \\ &\leq 2|A_1A_2| + 2|A_1A_r| \leq 4\sqrt{2}|A_1A_r| + 2|A_1A_r| \quad \text{since } \{A_1, A_2\} \subset A_r + \|A_1A_r\|\mathbb{B}. \end{aligned}$$

Plugging (4.5) and (4.4) into (4.3), we get (4.2) as claimed.

Step 3. Denoting now $(A_{j_i^1}, \dots, A_{j_i^{m(i)}}) := (A_1, \dots, A_r) \cap (\mathbb{P}_i + A_r)$ for each $i = 1, \dots, N$, where $j_i^l \in \{1, \dots, r\}$ (and, clearly, $j_i^{m(i)} = r$), one has applying the result of Step 2 (with j_i^1 instead of 1 and $j_i^{m(i)}$ instead of r) the estimate

$$\ell((A_1, \dots, A_r) \cap (\mathbb{P}_i + A_r)) \leq C|A_{j_i^1}A_{j_i^{m(i)}}| = C|A_{j_i^1}A_r| \leq C\sqrt{2}|A_1A_r|,$$

and hence applying (4.1), we conclude the proof. \square

From an easy particular case to the general situation. The above argument captures all the essential features of the complete proof: namely, the division of the unit ball \mathbb{B} of the norm in a finite number of “cone-like” subsets \mathbb{P}_i , the reduction of the estimate of the variation of (A_1, \dots, A_r) to the estimates of variations of its subvectors in each \mathbb{P}_i (i.e. Step 1 of the above proof, cfr. Step 1 of the proof of the key Lemma 6.13 in the sequel), and the separate estimate of the variation of a polygonal line inside each \mathbb{P}_i along each of the appropriately chosen axes with a separate consideration of “vertical” and “horizontal” line segments (i.e. Step 2 of the above proof). However, there are several substantial difficulties arising on this way, which we list below.

- (i) The first difficulty comes already when trying to generalize the above argument to the case $n = 2$ and the unit ball \mathbb{B} of the norm $\|\cdot\|$ an arbitrary convex *polygon* rather than a square. The division of \mathbb{B} into triangles \mathbb{P}_i and the choice of the axes for each \mathbb{P}_i is natural and clearly the same as in our simple model case of the maximum norm, see Figure 4.1(b), so that the self-contracted polygonal line with vertices inside \mathbb{P}_i with this choice never goes upwards in the direction of x^2 . However, the argument of Step 2 of the above model proof becomes much more involved because the estimates for “horizontal” and “vertical” parts of the polygonal line are not at all that simple as in the case of the maximum norm.
- (ii) The next difficulty comes with the case of a generic norm $\|\cdot\|$ (i.e. with the unit ball not necessarily a polygon) in \mathbb{R}^2 (i.e. still $n = 2$). In this case it is only possible to choose the division of the unit ball \mathbb{B} of the norm $\|\cdot\|$ into the sets \mathbb{P}_i such that with some natural choice of the direction x^2 for each \mathbb{P}_i the self-contracted polygonal line with vertices inside \mathbb{P}_i might go upwards in the direction of x^2 but “not too much”, see Figure 4.1(c). This naturally leads to quantitative notions of the “horizontality” and “verticality” for line segments.
- (iii) However, the major difficulty comes when trying to adapt these arguments to the generic space dimension n . In fact, consider even the simplest case, say, of the maximum norm $\|\cdot\|$ in \mathbb{R}^3 , with the unit ball \mathbb{B} of the norm being the cube $[-1, 1]^3$. The sets \mathbb{P}_i then are (quite similarly to the case of a maximum norm in \mathbb{R}^2) the six pyramids with one of the vertices in the origin, the bases being the faces of the cube (which in a sense justifies the notation \mathbb{P}_i for them). With the natural choice of coordinates for each of such pyramids (x^3 perpendicular to the base) the self-contracted polygonal line with vertices inside the pyramid can only go downwards in the direction of x^3 , but has a lot of freedom in the other two directions. Hence, intuitively, one has to consider separately the “horizontal” parts of this polygonal line making separate estimates for their subparts belonging again to different pyramids (of course, related to the pyramid \mathbb{P}_i originally considered), with vertices shifted away from the origin. This leads to the notion of *admissible* ordered sets of pyramids (see Definition 5.6), each such set producing a natural system of not necessarily orthogonal coordinates, and to a technically involved inductive argument for the generic space dimension. Very roughly speaking, in a generic space dimension n , in each of the sets \mathbb{P}_i we will calculate separately the variation of the “vertical” part of the self-contracted vector, which is easy by monotonicity (or “almost monotonicity” in the case of a generic norm, when \mathbb{P}_i is no more a pyramid) of x^n coordinates of the vertices, the axis x^n being determined by the set \mathbb{P}_i , and then, by induction, the variation of its “horizontal” part. When calculating the latter, we will arrange this part in subparts belonging to different sets \mathbb{P}_j , each one determining the respective axis x^{n-1} , and estimate again separately the variation of its “vertical” and “horizontal” parts (now with respect to x^{n-1}), proceeding by backward induction.

Note that as explained above, in principle one can avoid using induction for $n = 2$; however, the general proof we provide uses induction even in this relatively simple case. Last but not least, it is worth mentioning that for a generic norm $\|\cdot\|$ the sets \mathbb{P}_i are no more pyramids and may have a quite complicated structure (although this would not affect the proof).

5. PRELIMINARY CONSTRUCTIONS

5.1. Partition of a convex body. For a convex set $\mathbb{D} \subset \mathbb{R}^n$ we say that $\nu_x \in \mathbb{R}^n$ is a vector of external normal to \mathbb{D} at $x \in \partial\mathbb{D}$, if there is a support hyperplane Π to \mathbb{D} at x orthogonal to ν_x and ν_x is directed towards the open half-space bounded by Π and not containing \mathbb{D} . Clearly, an $x \in \partial\mathbb{D}$ may have many external normal vectors, unless $\partial\mathbb{D}$ is smooth.

We will need the following construction.

Proposition 5.1. *Let $\mathbb{D} \subset \mathbb{R}^n$ be a convex set. Then for every $\delta > 0$ there is a cover of $\partial\mathbb{D}$ by a finite number of sets $\{\mathbb{T}_i\}_{i=1}^N$ (with some $N = N(\delta) \in \mathbb{N}$) with the following property: for every $i \in \{1, \dots, N\}$ there is a vector ν^i such that for every $x \in \mathbb{T}_i$ there is a vector of external normal ν_x to \mathbb{D} at x with $\widehat{(\nu_x, \nu^i)} < \delta$.*

Proof. Given a $\delta > 0$, we take a finite cover of S^{n-1} as in the statement being proven, i.e. find $\{\tilde{\mathbb{T}}_i\}_{i=1}^N$ (with some $N = N(\delta) \in \mathbb{N}$), $\cup_{i=1}^N \tilde{\mathbb{T}}_i = S^{n-1}$ such that for every $i \in \{1, \dots, N\}$ there is a vector ν^i with the property that for every $x \in \tilde{\mathbb{T}}_i$ the unique vector of external unit normal ν_x to S^{n-1} at x satisfies $\widehat{(\nu_x, \nu^i)} < \delta$. It suffices to define now \mathbb{T}_i to be the set of all $x \in \partial\mathbb{D}$ that admit a unit vector of external normal ν_x to \mathbb{D} coinciding with some vector of external unit normal ν_y to S^{n-1} at some $y \in \tilde{\mathbb{T}}_i$. \square

Remark 5.2. Although the sets \mathbb{T}_i mentioned in the above Proposition 5.1 may be overlapping, we may easily make them disjoint by substituting \mathbb{T}_i with $\mathbb{T}_i \setminus \cup_{j=1}^{i-1} \mathbb{T}_j$.

Applying the above Proposition 5.1 with Remark 5.2 to the closed unit ball \mathbb{B} of $\|\cdot\|$, given a $\delta > 0$, we find an $N = N(\delta) \in \mathbb{N}$ and a finite family of disjoint sets $\{\mathbb{T}_i\}_{i=1}^N$ and vectors $\{\nu^i\}_{i=1}^N$ such that $\cup_i \mathbb{T}_i = \partial\mathbb{B}$ and for every $i \in \{1, \dots, N\}$ and every $x \in \mathbb{T}_i$ there is a vector of external unit normal ν_x to \mathbb{D} at x with $\widehat{(\nu_x, \nu^i)} < \delta$. Define then $\mathbb{P}_i := \cup_{t \in [0,1]} t\mathbb{T}_i$, and note that now by construction one has $\mathbb{P}_i \cap \mathbb{P}_j = \{0\}$ for $i \neq j$. We will further frequently use the following fact.

Lemma 5.3. *Let $(A_1, \dots, A_r) \subset \mathbb{P}_i + \widehat{A_r}$ for some $i \in \{1, \dots, N\}$ be self-contracted with respect to the norm $\|\cdot\|$. Then $((A_j A_{j+1}), (\nu^i)^\perp) > \delta$, $j \in \{1, \dots, r-1\}$ implies*

$$(A_j - A_{j+1}) \cdot \nu^i > 0.$$

Proof. The result follows from Lemma 5.4 below applied with $\mathbb{D} := A_r + \lambda\mathbb{B}$, $\mathbb{T} := A_r + \lambda\mathbb{T}_i$, where $\lambda := \|A_j - A_r\|$, A_j in place of A_1 and A_{j+1} in place of A_2 , once we observe that $A_{j+1} \in \mathbb{D}$ by self-contracted requirement on (A_1, \dots, A_r) . \square

The following immediate geometric fact has been used in the above proof.

Lemma 5.4. *Let $\mathbb{D} \subset \mathbb{R}^n$ be a convex set, $\delta > 0$, $\mathbb{T} \subset \partial\mathbb{D}$, $\nu \in \mathbb{R}^n$ be such that for every $x \in \mathbb{T}$ there is a vector of external normal ν_x to \mathbb{D} at x with $\widehat{(\nu_x, \nu)} < \delta$. If $A_1 \in \mathbb{T}$, $A_2 \in \mathbb{D}$ and $((A_1 A_2), \nu^\perp) > \delta$, then $(A_1 - A_2) \cdot \nu > 0$.*

Proof. If $B \in \mathbb{R}^n$ satisfying $((A_1 B), \nu^\perp) > \delta$ is such that $(B - A_1) \cdot \nu \geq 0$, then $(B - \widehat{A_1}, \nu) < \pi/2 - \delta$, so that

$$(B - \widehat{A_1}, \nu_{A_1}) \leq (B - \widehat{A_1}, \nu) + \widehat{(\nu, \nu_{A_1})} < \frac{\pi}{2} - \delta + \delta = \frac{\pi}{2}.$$

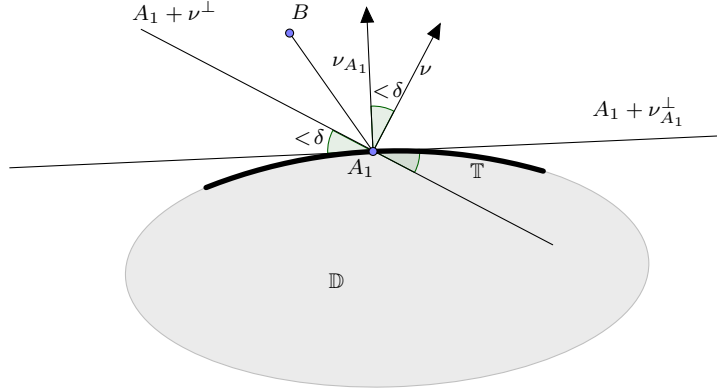


FIGURE 5.1. Construction of the proof of Lemma 5.4.

Hence B belongs to the open half-space bounded by the hyperplane $A_1 + \nu_{A_1}^\perp$ and not containing \mathbb{D} (see Figure 5.1). Thus, it is impossible that $(A_2 - A_1) \cdot \nu \geq 0$ because $A_2 \in D$, which concludes the proof. \square

For a linear subspace $\Pi \subset \mathbb{R}^n$ of arbitrary dimension, and an $\varepsilon \geq 0$ we define

$$V_\varepsilon(\Pi) := \{z \in \mathbb{R}^n : ((0, z), \Pi) \leq \varepsilon\} \cup \{0\},$$

We also need the following statement.

Lemma 5.5. *Let $\mathbb{D} \subset \mathbb{R}^n$ be a bounded convex set with nonempty interior $\text{int } \mathbb{D}$, and $0 \in \text{int } \mathbb{D}$. Then there is an $\varepsilon_0 > 0$ and a $\bar{\xi} \in (0, \pi/2)$ (depending only on \mathbb{D}) such that for every linear subspace $\Pi \subset \mathbb{R}^n$ of arbitrary dimension, and every $x \in V_{\varepsilon_0}(\Pi) \cap \partial \mathbb{D}$ one has that every external normal ν_x to \mathbb{D} at x satisfies $(\widehat{\nu_x, \Pi}) < \bar{\xi}$.*

Proof. If the claim is false, then there is a sequence of linear subspaces $\{\Pi_k\}$, and of points $\{x_k\} \subset \partial \mathbb{D}$ such that $\lim_k (\widehat{\nu_{x_k}, \Pi_k}) = \pi/2$. Up to passing to subsequences (not relabeled), we may assume that $\Pi_k \rightarrow \Pi$ in the sense of Hausdorff (for some linear subspace $\Pi \subset \mathbb{R}^n$), $x_k \rightarrow x \in \partial \mathbb{D}$, $\nu_{x_k} \rightarrow \nu$ (for some $\nu \in \mathbb{R}^n$) and support hyperplanes $x_k + (\nu_{x_k})^\perp$ to \mathbb{D} at x_k orthogonal to ν_{x_k} converge to $x + \nu^\perp$ which is necessarily a support hyperplane to \mathbb{D} at x (as limit of support hyperplanes) as $k \rightarrow \infty$. Since then $(\widehat{\nu, \Pi}) = \pi/2$, one has $\Pi \subset \nu^\perp$, and hence $0 \in \nu^\perp$, which means $0 \in \partial \mathbb{D}$, contradicting the assumption $0 \in \text{int } \mathbb{D}$. \square

We apply the above Lemma 5.5 to $\mathbb{D} := \mathbb{B}$ (the closed unit ball of $\|\cdot\|$), and find an $\varepsilon_0 > 0$ and a $\bar{\xi}$ depending only on \mathbb{B} (hence on $\|\cdot\|$) such that for every linear subspace $\Pi \subset \mathbb{R}^n$ of arbitrary dimension and every $x \in V_{\varepsilon_0}(\Pi) \cap \partial \mathbb{D}$ one has that every external normal ν_x to \mathbb{B} at x satisfies $(\widehat{\nu_x, \Pi}) < \bar{\xi} < \pi/2$. Hence denoting

$$\mathbb{A}_\varepsilon(\Pi) := \{i \in \{1, \dots, N\} : \mathbb{T}_i \cap V_\varepsilon(\Pi) \neq \emptyset\},$$

we have that $(\widehat{\nu^i, \Pi}) < \bar{\xi} + \delta$ for all $i \in \mathbb{A}_{\varepsilon_0}(\Pi)$. Thus there is a $\bar{\delta} > 0$ depending only on $\bar{\xi}$ (hence only on $\|\cdot\|$) such that $(\widehat{\nu^i, \Pi}) < \bar{\xi}$ for all $i \in \mathbb{A}_{\varepsilon_0}(\Pi)$ and for some $\xi \in (0, \pi/2)$, which

still depends only on $\|\cdot\|$, when $\delta < \bar{\delta}$ (one may take, say, $\xi := \bar{\xi}/2 + \pi/4$ and $\bar{\delta} := \pi/4 - \bar{\xi}/2$). The following notion will be at the heart of our inductive construction.

Definition 5.6. *We will call the (ordered) $(n - i + 1)$ -tuple of sets $(\mathbb{P}_{\alpha_i}, \dots, \mathbb{P}_{\alpha_n})$, with $\alpha_j \in \{1, \dots, N\}$, $j = i, \dots, n$, $i \in \{1, \dots, n\}$ admissible, if for all $j = i + 1, \dots, n$ one has*

$$\alpha_{j-1} \in \mathbb{A}_{\varepsilon_0}(\Pi^{j-1}), \quad \text{where } \Pi^{j-1} := (\text{span}\{\nu^{\alpha_k}\}_{k=j}^n)^\perp,$$

or, equivalently, $\mathbb{T}_{\alpha_{j-1}} \cap V_{\varepsilon_0}(\Pi^{j-1}) \neq \emptyset$, that is,

$$(5.1) \quad (\widehat{\nu^{\alpha_{j-1}}, \Pi^{j-1}}) < \xi \quad \text{for all } j = i + 1, \dots, n.$$

In case $i = n$ the ordered $(n - i + 1)$ -tuple $(\mathbb{P}_{\alpha_i}, \dots, \mathbb{P}_{\alpha_n})$ reduces to a singleton which is by definition always considered admissible.

Each admissible ordered n -tuple of sets $(\mathbb{P}_{\alpha_1}, \dots, \mathbb{P}_{\alpha_n})$ will determine in a natural way a (not necessarily orthogonal) coordinate system (different for different admissible n -tuples): in fact, the axes x^j , $j = 2, \dots, n$, will be directed along vectors ν^{α_j} determined by the sets \mathbb{P}_{α_j} , while the axis x^1 will be chosen orthogonal to all x^j with $j = 2, \dots, n$. The idea of the proof of Theorem 3.1 is then as follows: the whole vector (A_1, \dots, A_r) will be appropriately arranged in subvectors naturally corresponding to some admissible ordered n -tuples $(\mathbb{P}_{\alpha_1}, \dots, \mathbb{P}_{\alpha_n})$ so that the total variation of each of subvectors could be evaluated in a coordinate system determined by the respective n -tuple, and the total variation of the whole vector would then be estimated by the sum of variations of the chosen subvectors.

Finally, we will need the following simple geometric lemma.

Lemma 5.7. *Let $\Pi \subset \mathbb{R}^n$ be a k -dimensional linear subspace, $\{\nu_i\}_{i=1}^k \subset \Pi$ such that*

$$(5.2) \quad \left(x^i, \left(\widehat{\text{span}\{\nu_j\}_{j=i+1}^k} \right)^\perp \right) \leq \zeta, \quad i = 1, \dots, k - 1$$

for some $\zeta \in (0, \pi/2)$, where $x^i := \text{span}\{\nu_i\}$, $i = 1, \dots, k$. Then there is a constant $C = C_k(\zeta) > 0$ such that for every $A \in \mathbb{R}^n$ one has

$$|p_\Pi(A)| \leq C \sum_{i=1}^k |p_{x^i}(A)|.$$

Proof. Note first that according to the condition (5.2) on $\{\nu_j\}$, these vectors are linearly independent and hence $\Pi = \text{span}\{\nu_i\}_{i=1}^k$. One further notes that it is enough to prove the statement for $A \in \Pi$, which in this case reduces to

$$(5.3) \quad |A| \leq C_k(\zeta) \sum_{i=1}^k |p_{x^i}(A)|.$$

In fact then for an arbitrary $A \in \mathbb{R}^n$ one has the estimate

$$|p_\Pi(A)| \leq C_k(\zeta) \sum_{i=1}^k |p_{x^i}(p_\Pi(A))| \leq C_k(\zeta) \sum_{i=1}^k |p_{x^i}(A)|,$$

the latter inequality being valid because $|p_{x^i}(p_\Pi(A))| = |p_{x^i}(A)|$.

We therefore prove (5.3) for $A \in \Pi$. For this purpose we use the (finite) induction on k . The statement is trivial for $k = 1$ (with $C_1(\zeta) := 1$). Suppose it is true for $k = m$. To prove it for $k = m + 1$, for an arbitrary linear subspace $\Pi \subset \mathbb{R}^n$ of dimension $m + 1$ we denote

$$\begin{aligned}\Pi_m &:= \left(\text{span} \{ \nu_j \}_{j=2}^{m+1} \right)^\perp \cap \Pi, \\ \Pi_m^\perp &:= \text{span} \{ \nu_j \}_{j=2}^{m+1}.\end{aligned}$$

Note that for $A \in \Pi$ one has

$$(5.4) \quad \begin{aligned}p_{x^1}(A) &= p_{x^1}(p_{\Pi_m}(A) + p_{\Pi_m^\perp}(A)) = p_{x^1}(p_{\Pi_m}(A)) + p_{x^1}(p_{\Pi_m^\perp}(A)) \\ &= p_{\Pi_m}(A) \cos(\widehat{x^1, \Pi_m}) + p_{\Pi_m^\perp}(A) \sin(\widehat{x^1, \Pi_m}),\end{aligned}$$

and thus

$$\begin{aligned}|A| &\leq |p_{\Pi_m}(A)| + |p_{\Pi_m^\perp}(A)| \\ &= \frac{1}{\cos(\widehat{x^1, \Pi_m})} \left(|p_{x^1}(A)| - |p_{\Pi_m^\perp}(A)| \sin(\widehat{x^1, \Pi_m}) \right) + |p_{\Pi_m^\perp}(A)| \quad \text{by (5.4)} \\ &\leq \left(1 + \tan(\widehat{x^1, \Pi_m}) + \frac{1}{\cos(\widehat{x^1, \Pi_m})} \right) \left(|p_{x^1}(A)| + |p_{\Pi_m^\perp}(A)| \right) \\ &\leq \left(1 + \tan \zeta + \frac{1}{\cos \zeta} \right) \left(|p_{x^1}(A)| + |p_{\Pi_m^\perp}(A)| \right) \quad \text{because } \widehat{x^1, \Pi_m} \leq \zeta \\ &\leq \left(1 + \tan \zeta + \frac{1}{\cos \zeta} \right) \left(|p_{x^1}(A)| + C_m(\zeta) \sum_{i=2}^{k+1} |p_{x^i}(A)| \right) \quad \text{by inductive assumption,}\end{aligned}$$

which implies the claim with $C_{m+1}(\zeta) := \left(1 + \tan \zeta + \frac{1}{\cos \zeta} \right) (C_m(\zeta) \vee 1)$. \square

From now on we denote

$$(5.5) \quad C(\zeta) := \max_{k \in \{1, \dots, n\}} C_k(\zeta),$$

where $C_k(\zeta) > 0$ is defined by Lemma 5.7 (in fact, we may clearly always take $C_k(\zeta)$ non-decreasing with k , in which case $C(\zeta) = C_n(\zeta)$). Clearly, for a fixed ζ the constant $C(\zeta)$ depends only on the space dimension n .

5.2. Preliminary lemmata on self-contracted polygonal lines. In the sequel we will extensively use without any further reference the following immediate observations.

Remark 5.8. If (A_1, \dots, A_r) is self-contracted, then so is any its subvector $(A_{j_1}, \dots, A_{j_k})$.

Remark 5.9. If (A_1, \dots, A_r) is self-contracted, then

$$|A_j A_m| \leq C |A_1 A_r|$$

for all $(j, m) \subset \{1, \dots, r\}$ and for some $C > 0$ depending only on $\|\cdot\|$. In fact, the self-contracted property of (A_1, \dots, A_r) implies $\{A_j, A_m\} \subset A_r + \lambda \mathbb{B}$, where \mathbb{B} is the closed unit ball of $\|\cdot\|$ and $\lambda = |A_1 A_r|$, so that $|A_j A_m| \leq \lambda \text{diam } \mathbb{B}$, hence one may take $C := \text{diam } \mathbb{B}$.

We will also need the following lemmata.

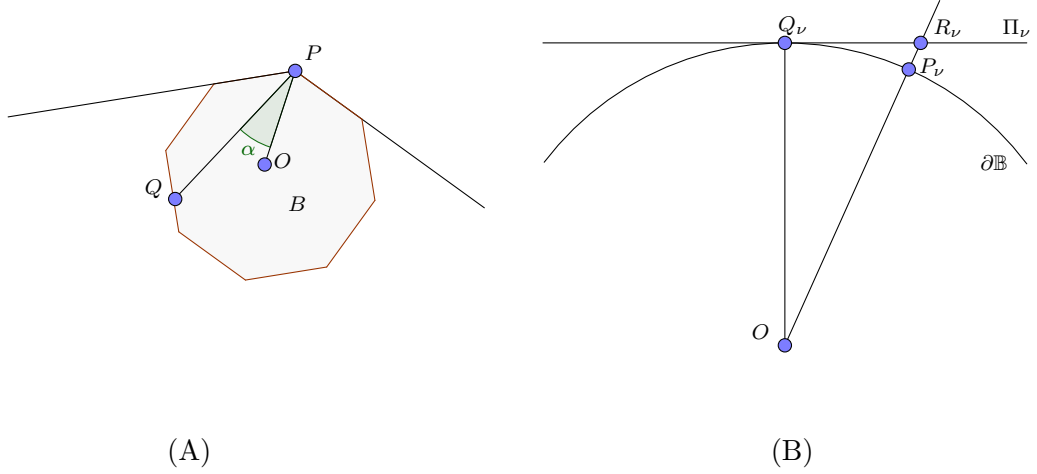


FIGURE 5.2. Constructions in the proof of Lemma 5.10. (A): Definition of $\Delta(\alpha)$. (B): Proof of $\Delta(\alpha) > 0$.

Lemma 5.10. *There is a constant $\varepsilon_1 \in (0, \pi/2)$ depending only on the norm $\|\cdot\|$ such that when the vector (A_1, A_2, A_3) is self-contracted with respect to the norm $\|\cdot\|$, $\angle A_1 A_2 A_3 \leq 2\varepsilon_1$, then $|A_2 A_3| \leq 3/4|A_1 A_2|$.*

Proof. Let \mathbb{B} as usual stand for the closed unit ball of the norm $\|\cdot\|$. By Lemma 5.5 the minimum over $P \in \partial\mathbb{B}$ angle between (OP) and any support hyperplane to \mathbb{B} at $P \in \partial\mathbb{B}$, is at least $\pi/2 - \bar{\xi} > 0$. For an arbitrary $\alpha \in (0, \pi/2 - \bar{\xi})$ denote

$$\Delta(\alpha) := \inf\{|PQ| : \{P, Q\} \subset \partial\mathbb{B}, P \neq Q, \angle OPQ \leq \alpha\},$$

see Figure 5.2(A). We have that $\Delta(\alpha) > 0$. In fact, otherwise there is a sequence $\{P_\nu, Q_\nu\}_\nu \subset \partial\mathbb{B}$, $P_\nu \neq Q_\nu$, $\lim_\nu P_\nu = \lim_\nu Q_\nu = P \subset \partial\mathbb{B}$, $\angle OP_\nu Q_\nu \leq \alpha$. Choose an arbitrary support hyperplane Π_ν to \mathbb{B} at Q_ν . Without loss of generality we may assume the existence of a limit $\lim_\nu \Pi_\nu = \Pi$, and thus Π is a support hyperplane to \mathbb{B} at P . Denoting $R_\nu := \Pi_\nu \cap (OP_\nu)$, we get

$$\begin{aligned} ((\widehat{OP}), \Pi) &= \lim_\nu ((\widehat{OP_\nu}), \Pi_\nu) \leq \lim_\nu \angle OR_\nu Q_\nu \\ &\leq \lim_\nu \angle OP_\nu Q_\nu \quad \text{because } P_\nu \in [OR_\nu], \\ &\leq \alpha, \end{aligned}$$

see Figure 5.2(B), which is impossible for $\alpha \in (0, \pi/2 - \bar{\xi})$, because $((\widehat{OP}), \Pi) \geq \pi/2 - \bar{\xi}$.

Consider the set $\mathbb{D}_3 := \{z \in \mathbb{R}^n : \|A_2 - z\| \leq \|A_1 - z\|\}$ (see Figure 5.3) and observe that $\{A_2, A_3\} \subset \mathbb{D}_3$. By Lemma A.2 there is an $\bar{\varepsilon} > 0$ such that

$$(5.6) \quad |A_2 C_\alpha| \leq 3/4|A_1 A_2| \quad \text{when } \angle A_1 A_2 C_\alpha \leq 2\bar{\varepsilon}, C_\alpha \in M(A_1, A_2),$$

where $M(A_1, A_2)$ stands for the *mediatrix* of the segment $[A_1 A_2]$ (i.e. the set of points equidistant from the endpoints of the segment). Fix an arbitrary $\alpha \in (0, \pi/2 - \bar{\xi})$ and let $\varepsilon_1 := \bar{\varepsilon} \wedge \alpha/2$, so that $\Delta(2\varepsilon_1) \geq \Delta(\alpha) > 0$ by definition of $\Delta(\cdot)$. We can find an $r \geq \|A_2 - A_3\|$ such that

$r\Delta(2\varepsilon_1) > |A_1A_2|$, thus for every $\{P, Q\} \subset \partial(r\mathbb{B} + C)$, $C \in \mathbb{R}^n$, $P \neq Q$, $\angle CPQ \leq 2\varepsilon_1$ one has $|PQ| > |A_1A_2|$. Suppose that $\angle A_1A_2A_3 \leq 2\varepsilon_1$. Consider the point $C \in [A_2A_3]$ with $\|A_2 - C\| = r$. One has $A_2 \in \partial(r\mathbb{B} + C)$. Thus if $Q \in (A_1A_2) \cap \partial(r\mathbb{B} + C)$, $Q \neq A_2$ and is on the line (A_1A_2) on the same side of A_2 as A_1 , then $|A_2Q| > |A_1A_2|$, which implies $A_1 \in r\mathbb{B} + C$, i.e. $\|A_1 - C\| < r = \|A_2 - C\|$, or, in other words, $C \in \mathbb{D}_3^c$. Thus there is a point $C' \in [A_3, C]$ such that $C' \in M(A_1, A_2)$, see Figure 5.3. Therefore,

$$|A_2A_3| \leq |A_2C'| \leq 3/4|A_1A_2|,$$

the last inequality being due to (5.6). \square

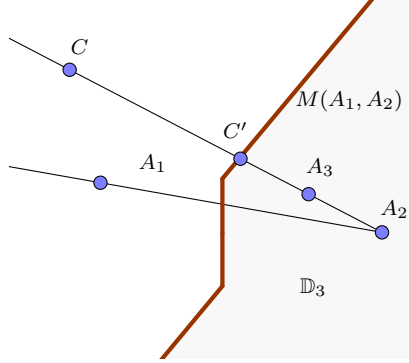


FIGURE 5.3. Proof of the claim of Lemma 5.10.

Corollary 5.11. *Assume that the vector (A_1, \dots, A_r) is self-contracted with respect to the norm $\|\cdot\|$ and has alternating directions along some axis $x = \text{span}\{\nu\}$ for some $\nu \in \mathbb{R}^n$, i.e. the finite sequence of numbers $\{(A_{k+1} - A_k) \cdot \nu\}_{k=1}^{r-1}$ has alternating signs. If each segment $[A_kA_{k+1}]$, $k = 1, \dots, r-1$, is ε_1 -horizontal with respect to x , where $\varepsilon_1 > 0$ is as in Lemma 5.10, then*

$$(5.7) \quad \ell(A_1, \dots, A_r) \leq 4|A_1A_2|.$$

Proof. By triangle inequality for $((A_{k-1}\widehat{A_k}), x)$ and $((A_k\widehat{A_{k+1}}), x)$ we get $\angle A_{k-1}A_kA_{k+1} \leq 2\varepsilon_1$. Hence applying Lemma 5.10 to each consecutive triple (A_{k-1}, A_k, A_{k+1}) yields

$$|A_kA_{k+1}| \leq 3/4|A_{k-1}A_k|, \quad k = 2, \dots, r-1.$$

Thus,

$$\ell(A_1, \dots, A_r) = \sum_{k=1}^{r-1} |A_kA_{k+1}| \leq |A_1A_2| \sum_{k=1}^{r-1} \left(\frac{3}{4}\right)^{k-1} \leq 4|A_1A_2|$$

proving (5.7). \square

6. INDUCTIVE CONSTRUCTION

From now on we consider the constants $\varepsilon_0 > 0$ defined by Lemma 5.5 and $\varepsilon_1 > 0$ defined by Lemma 5.10. Let also $\bar{\delta}$ and ξ be as defined in Section 5.1, the constant $C(\xi)$ be defined by (5.5) and set

$$\delta_0 := \bar{\delta} \wedge \arctan \frac{\sin \varepsilon_0}{8(n-1)C(\xi)} \wedge \arctan \left(\frac{1}{8(n-1)(3 \cot \varepsilon_1 + 8/\sin \varepsilon_1)C(\xi)} \right).$$

The proof of Theorem 3.1 will be based on the following assertion.

Proposition 6.1. *Assume that $\delta \in (0, \delta_0)$. Then there exists a constant $C > 0$ depending only on $\|\cdot\|$ and on δ such that whenever the vector $(A_1, \dots, A_r) \subset \mathbb{R}^n$ is self-contracted with respect to the norm $\|\cdot\|$ and $(A_1, \dots, A_r) \subset \mathbb{P}_{\alpha_n} + A_r$ for some $\alpha_n \in \{1, \dots, N\}$, then*

$$(6.1) \quad \ell(A_1, \dots, A_r) \leq C|A_1 A_r|,$$

with $C > 0$ depending only on $\|\cdot\|$, n , δ and ξ .

Remark 6.2. Note that both the self-contracted property and (6.1) are stable under scalings and translations.

Taking for the moment this result for granted, we may easily prove Theorem 3.1.

Proof of Theorem 3.1. Up to scaling we may assume that the closed unit ball \mathbb{B} of the norm $\|\cdot\|$ in \mathbb{R}^n satisfies $\min_{x \in \partial \mathbb{B}} |x| \geq 1$. We identify now \mathbb{R}^n with the subset $\mathbb{R}^n \times \{0\}$ of \mathbb{R}^{n+1} and write every element $x \in \mathbb{R}^{n+1}$ as a pair $\tilde{x} = (x', x_{n+1})$, $x' \in \mathbb{R}^n$, $x_{n+1} \in \mathbb{R}$, so that every element of $x \in \mathbb{R}^n$ is identified with some $(x, 0) \subset \mathbb{R}^{n+1}$. Equip $\mathbb{R}^n \times [0, 1]$ with the norm defined so that its closed unit ball be $\tilde{\mathbb{B}} := \mathbb{B} \times [-1, 1]$. Define the decomposition of this closed unit ball $\tilde{\mathbb{B}}$ as follows. If the family of sets $\{\mathbb{T}_j\}_{j=1}^N$ is the disjoint cover of $\partial \mathbb{B} \subset \mathbb{R}^n$ defined by Proposition 5.1, we define the disjoint cover of $\partial \tilde{\mathbb{B}}$ by the family consisting of sets $\tilde{\mathbb{T}}_j := \mathbb{T}_j \times (-1, 1)$, $j = 1, \dots, N$, and two additional sets $\tilde{\mathbb{T}}_{N+1} := \mathbb{B} \times \{1\}$ and $\tilde{\mathbb{T}}_{N+2} := \mathbb{B} \times \{-1\}$. Clearly, this cover satisfies the property defined by Proposition 5.1. We set then $\tilde{\mathbb{P}}_i := \cup_{t \in [0, 1]} t \mathbb{T}_i$. Now we consider (A_1, \dots, A_r) as a subset of \mathbb{R}^{n+1} . Recalling Remark 6.2, without loss of generality we may scale all A_j so as to have $|A_1 A_r| = 1$ and then shift them by a fixed vector so as to have $A_r = (0, 1)$ and all A_j belong to the hyperplane $\{x_{n+1} = 1\}$. Clearly, the vector $(A_1, \dots, A_r, 0)$ is still self-contracted with respect to the introduced norm in \mathbb{R}^{n+1} and $(A_1, \dots, A_r, 0) \subset \tilde{\mathbb{P}}_{N+1}$ by construction. Applying Proposition 6.1 with $(A_1, \dots, A_r, 0)$ instead of (A_1, \dots, A_r) , \mathbb{R}^{n+1} (with the introduced norm) instead of \mathbb{R}^n (with the original norm $\|\cdot\|$), $n+1$ instead of n , $\tilde{\mathbb{P}}_j$ instead of \mathbb{P}_j and $\alpha_{n+1} := N+1$, we get

$$\ell(A_1, \dots, A_r) \leq \ell(A_1, \dots, A_r, 0) \leq C|A_1| \leq C\sqrt{2} = C\sqrt{2}|A_1 A_r|$$

with $C > 0$ as claimed. \square

The proof of Proposition 6.1 is the immediate application of the following inductive statement with $i := n$.

Proposition 6.3. *Assume that $\delta \in (0, \delta_0)$. Then for every $i \in \{1, \dots, n\}$ there exists a constant $C_i > 0$ depending only on $\|\cdot\|$, n , δ and ξ such that whenever $(n-i+1)$ -tuple $(\mathbb{P}_{\alpha_i}, \dots, \mathbb{P}_{\alpha_n})$ is admissible, the vector $(A_j)_{j=1}^{r+n-i} \subset \mathbb{R}^n$ is self-contracted with respect to the norm $\|\cdot\|$ and $(A_1, \dots, A_r) \subset \mathbb{P}_{\alpha_j} + A_{r+n-j}$ for all $j = i, \dots, n$, then*

$$\ell(A_1, \dots, A_r) \leq C_i |A_1 A_r|.$$

The proof of the above Proposition 6.3 is just a (finite) induction on $i \in \{1, \dots, n\}$ with the base of induction given by Lemma 6.4 and the inductive step given by Lemma 6.13 provided in the sequel.

6.1. Base of induction. We prove the following statement that will serve as a base of induction.

Lemma 6.4. *Let*

$$\delta \in \left(0, \bar{\delta} \wedge \arctan \left(\frac{1}{8(n-1)(3 \cot \varepsilon_1 + 8/\sin \varepsilon_1)C(\xi)} \right) \right),$$

where $\varepsilon_1 > 0$ is defined by Lemma 5.10 (this is true in particular when $\delta \in (0, \delta_0)$), and the n -tuple $(\mathbb{P}_{\alpha_1}, \dots, \mathbb{P}_{\alpha_n})$ with $\alpha_j \in \{1, \dots, N\}$, $j = 1, \dots, n$, be admissible. Assume that the vector $(A_1, \dots, A_r, A_{r+1}, \dots, A_{r+n-1}) \subset \mathbb{R}^n$ is self-contracted with respect to the norm $\|\cdot\|$ and $(A_1, \dots, A_r) \subset \mathbb{P}_{\alpha_j} + A_{r+n-j}$ for all $j = 1, \dots, n$. Then

$$(6.2) \quad \ell(A_1, \dots, A_r) \leq C_1 |A_1 A_r|$$

for some constant $C_1 > 0$ depending only on the norm $\|\cdot\|$, n , δ and ξ .

The rest of this section will be dedicated to the proof of the above Lemma 6.4. To this aim we consider the coordinate system with the origin in A_r and axes x^j directed along vectors ν^{α_j} determined by the sets \mathbb{P}_{α_j} with $\alpha_j \in \{1, \dots, N\}$, $j = 2, \dots, n$, and $x^1 := (\text{span}\{\nu^{\alpha_j}\}_{j=2}^n)^\perp$ (with arbitrarily chosen direction). For brevity we denote $A_i^j := p_{x^j}(A_i)$.

6.1.1. Common lemmata. We will need a couple of assertions that will serve both for the base of induction and for the inductive step.

Lemma 6.5. *Assume that $\delta \in (0, \bar{\delta})$, and that for some $i \in \{2, \dots, n\}$ the $(n-i+2)$ -tuple of sets $(\mathbb{P}_{\alpha_{i-1}}, \dots, \mathbb{P}_{\alpha_n})$ is admissible. Then for every vector (A_1, \dots, A_r) one has*

$$\ell_{(\Pi^{i-1})^\perp}(A_1, \dots, A_r) \leq C(\xi) \sum_{j=i}^n \ell_{x_j}(A_1, \dots, A_r),$$

where, as usual, $x_j = \text{span}\{\nu^{\alpha_j}\}$, $j = i, \dots, n$, and $\Pi^{i-1} = (\text{span}\{\nu^{\alpha_j}\}_{j=i}^n)^\perp$.

Proof. Applying Lemma 5.7 with $\Pi := (\Pi^{i-1})^\perp$, $k := n-i+1$, $\nu_j := \nu^{\alpha_j}$, $j = i, \dots, n$ and $\zeta := \xi$ (the conditions of Lemma 5.7 are satisfied in view of (5.1), recalling that $\delta < \bar{\delta}$), we get

$$|p_{(\Pi^{i-1})^\perp}(A)| \leq C(\xi) \sum_{j=i}^n |p_{x_j}(A)|$$

for every $A \in \mathbb{R}^n$, and plugging in the latter inequality $A := A_{m+1} - A_m$, $m = 1, \dots, r-1$, and summing over such m , we get the claim. \square

Lemma 6.6. *Let (A_1, \dots, A_r) be such that for some $\nu \in \mathbb{R}^n$, denoting by $x_k := (A_k - A_r) \cdot \nu$, one has $x_k < x_{k-1}$ whenever $((A_{k-1} A_k), \nu^\perp) > \delta$. Then*

$$(6.3) \quad \ell_x(A_1, \dots, A_r) \leq |A_1 A_r| + 2\ell_{x^\perp}(A_1, \dots, A_r) \tan \delta,$$

where $x = \text{span}\{\nu\}$.

Proof. For $j \in \{2, \dots, n\}$ we have

$$\begin{aligned} x_1 - x_r &= - \sum_{k=2}^r (x_k - x_{k-1}) = - \sum_{k \in \{2, \dots, r\}, x_k > x_{k-1}} |x_k - x_{k-1}| + \sum_{k \in \{2, \dots, r\}, x_k < x_{k-1}} |x_k - x_{k-1}| \\ &= -\ell_x(A_1, \dots, A_r) + 2 \sum_{k \in \{2, \dots, r\}, x_k > x_{k-1}} |x_k - x_{k-1}|, \end{aligned}$$

so that

$$\begin{aligned} \ell_x(A_1, \dots, A_r) &\leq |x_r - x_1| + 2 \sum_{k \in \{2, \dots, r\}, x_k > x_{k-1}} |x_k - x_{k-1}| \\ &\leq |x_r - x_1| + 2 \sum_{k \in \{2, \dots, r\}, x_k > x_{k-1}} |p_{x^\perp}(A_k) - p_{x^\perp}(A_{k-1})| \tan \delta. \end{aligned}$$

Thus,

$$\begin{aligned} \ell_x(A_1, \dots, A_r) &\leq |x_r - x_1| + 2\ell_{x^\perp}(A_1, \dots, A_r) \tan \delta \\ &\leq |A_1 A_r| + 2\ell_{x^\perp}(A_1, \dots, A_r) \tan \delta \end{aligned}$$

proving the claim. \square

We will also need the following easy calculation.

Lemma 6.7. *If for some $i \in \{1, \dots, n\}$ one has*

$$(6.4) \quad L_j \leq L_0 + C \sum_{k=i}^n L_k, \quad j = i, \dots, n,$$

with some $C \in (0, (n-i+1)^{-1}/2)$, then $\sum_{j=i}^n L_j \leq 2(n-i+1)L_0$ and $L_j \leq 2L_0$ for all $j = i, \dots, n$.

Proof. Summing (6.4) over $j = i, \dots, n$, we obtain

$$\sum_{j=i}^n L_j \leq (n-i+1)L_0 + (n-i+1)C \sum_{j=i}^n L_j,$$

so that in view of $(n-i+1)C \leq 1/2$ one has

$$\sum_{j=i}^n L_j \leq 2(n-i+1)L_0,$$

and hence the statement is proven by plugging the latter relationship into (6.4). \square

6.1.2. *Estimate of the variation of (A_1, \dots, A_r) along each x^j , $j = 2, \dots, n$.*

Lemma 6.8. *Assume that*

$$(6.5) \quad \delta \in \left(0, \bar{\delta} \wedge \arctan \frac{1}{4(n-1)C(\xi)}\right)$$

(this is true in particular when δ is as in Lemma 6.4), the n -tuple $(\mathbb{P}_{\alpha_1}, \dots, \mathbb{P}_{\alpha_n})$ with $\alpha_j \in \{1, \dots, N\}$, $j = 1, \dots, n$, and the vector $(A_1, \dots, A_r, A_{r+1}, \dots, A_{r+n-1}) \subset \mathbb{R}^n$ satisfy conditions of Lemma 6.4. Then one has

$$(6.6) \quad \ell_{x^j}(A_1, \dots, A_r) \leq 2|A_1 A_r| + 4\ell_{x^1}(A_1, \dots, A_r) \tan \delta, \quad j = 2, \dots, n.$$

Proof. Note first that in the particular case when δ is as in Lemma 6.4, then the trivial inequality $3 \cos \varepsilon_1 + 8 \geq (\sin \varepsilon_1)/2$ (with $\varepsilon_1 > 0$ defined by Lemma 5.10) implies $3 \cot \varepsilon_1 + 8/\sin \varepsilon_1 \geq 1/2$, and therefore δ satisfies (6.5).

For a generic δ satisfying (6.5), since $(A_1, \dots, A_r) \subset \mathbb{P}_{\alpha_j} + A_{r+n-j}$ for $j \in \{2, \dots, n\}$ as requested by Lemma 6.4, then (A_1, \dots, A_r) satisfies conditions of Lemma 6.6 (with ν^{α_j} instead of ν) in view of Lemma 5.3, and hence by Lemma 6.6 one has

$$(6.7) \quad \begin{aligned} \ell_{x^j}(A_1, \dots, A_r) &\leq |A_1 A_r| + 2\ell_{(x^j)^\perp}(A_1, \dots, A_r) \tan \delta \leq |A_1 A_r| + 2\ell(A_1, \dots, A_r) \tan \delta \\ &\leq |A_1 A_r| + 2\ell_{x^1}(A_1, \dots, A_r) \tan \delta + 2\ell_{(x^1)^\perp}(A_1, \dots, A_r) \tan \delta. \end{aligned}$$

By Lemma 6.5 with $i := 2$, we get

$$\ell_{(x^1)^\perp}(A_1, \dots, A_r) \leq C(\xi) \sum_{k=2}^n \ell_{x_k}(A_1, \dots, A_r).$$

Thus (6.7) becomes

$$(6.8) \quad \ell_{x^j}(A_1, \dots, A_r) \leq |A_1 A_r| + 2\ell_{x^1}(A_1, \dots, A_r) \tan \delta + 2 \tan \delta C(\xi) \sum_{k=2}^n \ell_{x_k}(A_1, \dots, A_r).$$

We may now apply Lemma 6.7 with

$$\begin{aligned} L_0 &:= |A_1 A_r| + 2\ell_{x^1}(A_1, \dots, A_r) \tan \delta, \\ L_j &:= \ell_{x^j}(A_1, \dots, A_r), \end{aligned}$$

$i := 2$ and $C := 2 \tan \delta C(\xi)$ (recalling $\tan \delta < 1/(4(n-1)C(\xi))$) to get the claim. \square

6.1.3. *Estimate of the variation of (A_1, \dots, A_r) along x^1 .* Everywhere in this subsection we denote for brevity of notation $A_j^\perp := p_{(x^1)^\perp}(A_j)$.

Lemma 6.9. *Assume that the vector (A_1, \dots, A_r) is self-contracted with respect to the norm $\|\cdot\|$. Then for an arbitrary line x^1 one has*

$$(6.9) \quad \ell_{x^1}(A_1, \dots, A_r) \leq C_1 \ell_{(x^1)^\perp}(A_1, \dots, A_r) + C_2 |A_1 A_r|,$$

with some positive constants C_1 and C_2 depending only on the norm $\|\cdot\|$, and in particular, one can take $C_1 := 3 \cot \varepsilon_1 + 8/\sin \varepsilon_1$, where $\varepsilon_1 > 0$ is defined by Lemma 5.10, and $C_2 := \text{diam } \mathbb{B}$, where \mathbb{B} is the closed unit ball of $\|\cdot\|$.

Proof. Let $\varepsilon_1 > 0$ be as in Lemma 5.10. Starting from the last line segment $[A_{k-1}A_k]$ ε_1 -horizontal with respect to x^1 (i.e. with maximum $k \in \{2, \dots, r\}$ such that $[A_{k-1}A_k]$ is horizontal) we find the minimum $q \in \{1, k-1\}$ such that $(A_q, A_{q+1}, \dots, A_k)$ satisfies conditions of Lemma 6.11 (with x^1 instead of x and $\varepsilon := \varepsilon_1$). Now we repeat the same operation with $q-1$ instead of r , and continue in this way by backward induction as far as possible. In this way we find a finite sequence of disjoint intervals $\{q_i, q_i+1, \dots, k_i\}_{i=1}^\nu$ of $\{1, \dots, r\}$ such that $(A_{q_i}, A_{q_i+1}, \dots, A_{k_i})$ satisfies conditions of Lemma 6.11 (again with x^1 instead of x and $\varepsilon := \varepsilon_1$), while the subvector

$$(A_j)_{j \in \Lambda} \subset (A_1, \dots, A_r)$$

obtained from (A_1, \dots, A_r) by canceling all the points A_j with $j \in \cup_{i=1}^\nu \{q_i+1, \dots, k_i-1\}$, satisfies conditions of Lemma 6.12. Therefore, denoting for convenience $(\tilde{A}_1, \dots, \tilde{A}_\rho) :=$

$(A_j)_{j \in \Lambda}$, we get

$$\begin{aligned}
 \ell_{x^1}(A_1, \dots, A_r) &= \ell_{x^1}(\tilde{A}_1, \dots, \tilde{A}_\rho) - \sum_{i=1}^{\nu} |A_{q_i}^1 A_{k_i}^1| + \sum_{i=1}^{\nu} \ell_{x^1} \left((A_j)_{j=q_i}^{k_i} \right) \\
 &\leq \ell_{x^1}(\tilde{A}_1, \dots, \tilde{A}_\rho) \\
 &\quad + 2 \cot \varepsilon_1 \sum_{i=1}^{\nu} \ell_{(x^1)^\perp} \left((A_j)_{j=q_i}^{k_i} \right) \quad \text{by Lemma 6.11 with } x^1 \text{ instead of } x \\
 &\leq C \ell_{(x^1)^\perp}(\tilde{A}_1, \dots, \tilde{A}_\rho) + |\tilde{A}_1 \tilde{A}_2| \\
 &\quad + 2 \cot \varepsilon_1 \sum_{i=1}^{\nu} \ell_{(x^1)^\perp} \left((A_j)_{j=q_i}^{k_i} \right) \quad \text{by Lemma 6.12} \\
 &\leq C \ell_{(x^1)^\perp}(A_1, \dots, A_r) + |\tilde{A}_1 \tilde{A}_2| + 2 \ell_{(x^1)^\perp}(A_1, \dots, A_r) \cot \varepsilon_1 \\
 &= (C + 2 \cot \varepsilon_1) \ell_{(x^1)^\perp}(A_1, \dots, A_r) + |\tilde{A}_1 \tilde{A}_2|,
 \end{aligned}$$

which concludes the proof (up to setting $C_1 := C + 2 \cot \varepsilon_1$, $C_2 := \text{diam } \mathbb{B}$, where \mathbb{B} is the closed unit ball of $\|\cdot\|$, and recalling that by Lemma 6.12 one can take $C := \cot \varepsilon_1 + 8/\sin \varepsilon_1$), because $|\tilde{A}_1 \tilde{A}_2| \leq C_2 |A_1 A_r|$ by Remark 5.9 (since $(\tilde{A}_1, \dots, \tilde{A}_\rho) \subset (A_1, \dots, A_r)$). \square

Corollary 6.10. *Under conditions of Lemma 6.4 one has*

$$(6.10) \quad \ell_{x^1}(A_1, \dots, A_r) \leq C_1 \sum_{i=2}^n \ell_{x^i}(A_1, \dots, A_r) + C_2 |A_1 A_r|,$$

with some positive constants C_1 depending only on $\|\cdot\|$, n and ξ , and C_2 depending only on $\|\cdot\|$. In particular, one can take $C_1 := (3 \cot \varepsilon_1 + 8/\sin \varepsilon_1)C(\xi)$, where $\varepsilon_1 > 0$ is defined by Lemma 5.10, and $C_2 := \text{diam } \mathbb{B}$, \mathbb{B} standing for the closed unit ball of $\|\cdot\|$.

Proof. By Lemma 6.5 with $i := 2$, one has

$$\ell_{(x^1)^\perp}(A_1, \dots, A_r) \leq C(\xi) \sum_{k=2}^n \ell_{x_k}(A_1, \dots, A_r).$$

Plugging this estimate into the inequality (6.9) from Lemma 6.9, one gets the result. \square

The following lemmata have been used in the proof of the above Lemma 6.9.

Lemma 6.11. *Let (A_1, \dots, A_r) be such that*

- (A) *each line segment $[A_i A_r]$, $i = 1, \dots, r-1$, is ε -horizontal with respect to the axis x , passing through A_r parallel to ν , and directed in the direction of ν .*
- (B) *each line segment $[A_k A_{k+1}]$, $k \in \{1, \dots, r-1\}$ which is ε -horizontal with respect to x has projection on x of the same direction as that of $[A_{r-1} A_r]$, i.e. denoting by $x_k := (A_k - A_r) \cdot \nu$, one has*

$$(x_{k+1} - x_k)(x_r - x_{r-1}) \geq 0.$$

Then $[A_1 A_r]$ has projection on x of the same direction as that of $[A_{r-1} A_r]$, i.e.

$$(6.11) \quad (x_r - x_1)(x_r - x_{r-1}) \geq 0,$$

and

$$(6.12) \quad \ell_x(A_1, \dots, A_r) \leq |x_r - x_1| + 2 \ell_{x^\perp}(A_1, \dots, A_r) \cot \varepsilon.$$

It is worth emphasizing that the above Lemma 6.11 does not require that (A_1, \dots, A_r) be self-contracted.

Proof. We first prove that for each $k = 1, \dots, r-1$, the line segment $[A_k A_r]$ has projection on x of the same direction as that of $[A_{r-1} A_r]$, i.e.

$$(6.13) \quad (x_r - x_k)(x_r - x_{r-1}) \geq 0,$$

so that in particular (6.11) follows. The relationship (6.13) is proven by backward induction on k . In fact, the base $k = r-1$ is automatic, while the inductive step is proven by contradiction as follows. Suppose that (6.13) holds for some $k = j$, where $j \in \{2, \dots, r-1\}$, but does not hold for $k = j-1$. By assumption (B) this is only possible when $[A_{j-1} A_j]$ is ε -vertical with respect to the x axis. Denoting for brevity $a := A_r - A_{j-1}$ and $b := A_j - A_r$, we have that a and b have the same direction with respect to x , i.e. $(a \cdot \nu)(b \cdot \nu) > 0$ and $(\widehat{a, \nu'}) \leq \varepsilon$, $(\widehat{b, \nu'}) \leq \varepsilon$ with either $\nu' = \nu$ or $\nu' = -\nu$. Then

$$\begin{aligned} \cos((\widehat{A_{j-1} A_j}), x) &\geq \cos(\widehat{a+b, \nu'}) = \frac{\cos(\widehat{a, \nu'})|a| + \cos(\widehat{b, \nu'})|b|}{|a+b|} \\ &\geq \cos \varepsilon \frac{|a| + |b|}{|a+b|} \geq \cos \varepsilon, \end{aligned}$$

so that $((\widehat{A_{j-1} A_j}), x) \leq \varepsilon$ contradicting ε -verticality of $[A_{j-1} A_j]$ with respect to the x axis and hence concluding the proof of (6.13).

To prove (6.12), we note that

$$x_r - x_1 = \sum_{\substack{i \in \{1, \dots, r-1\} \\ [A_i A_{i+1}] \text{ horizontal}}} (x_{i+1} - x_i) + \sum_{\substack{i \in \{1, \dots, r-1\} \\ [A_i A_{i+1}] \text{ vertical}}} (x_{i+1} - x_i),$$

so that by (B), one has

$$\begin{aligned} |x_r - x_1| &\geq \left| \sum_{\substack{i \in \{1, \dots, r-1\} \\ [A_i A_{i+1}] \text{ horizontal}}} (x_{i+1} - x_i) \right| - \sum_{\substack{i \in \{1, \dots, r-1\} \\ [A_i A_{i+1}] \text{ vertical}}} |x_{i+1} - x_i| \\ &= \sum_{\substack{i \in \{1, \dots, r-1\} \\ [A_i A_{i+1}] \text{ horizontal}}} |x_{i+1} - x_i| - \sum_{\substack{i \in \{1, \dots, r-1\} \\ [A_i A_{i+1}] \text{ vertical}}} |x_{i+1} - x_i| \\ &= \sum_{i=1}^{r-1} |x_{i+1} - x_i| - 2 \sum_{\substack{i \in \{1, \dots, r-1\} \\ [A_i A_{i+1}] \text{ vertical}}} |x_{i+1} - x_i| \\ &\geq \sum_{i=1}^{r-1} |x_{i+1} - x_i| - 2 \sum_{\substack{i \in \{1, \dots, r-1\} \\ [A_i A_{i+1}] \text{ vertical}}} |p_{x^\perp}(A_{i+1} - A_i)| \cot \varepsilon \\ &\geq \ell_x(A_1, \dots, A_r) - 2\ell_{x^\perp}(A_1, \dots, A_r) \cot \varepsilon, \end{aligned}$$

concluding the proof. \square

Lemma 6.12. *Assume that the vector (A_1, \dots, A_r) be self-contracted with respect to the norm $\|\cdot\|$. Let also $\varepsilon \in (0, \varepsilon_1]$, where ε_1 is defined by Lemma 5.10, and for each line segment $[A_k A_{k+1}]$ with $k = 2, \dots, r-1$ which is ε -horizontal with respect to x^1 axis the preceding line segment $[A_{k-1} A_k]$ is either also ε -horizontal with respect to x^1 axis and its projection on x^1 is directed oppositely to that of $[A_k A_{k+1}]$, i.e.*

$$(x_{k+1}^1 - x_k^1)(x_k^1 - x_{k-1}^1) < 0,$$

or is ε -vertical with respect to x^1 axis, and so is $[A_{k-1} A_{k+1}]$. Then

$$(6.14) \quad \ell_{x^1}(A_1, \dots, A_r) \leq C \ell_{(x^1)^\perp}(A_1, \dots, A_r) + |A_1 A_2|,$$

with some positive constant C depending only on ε (and in particular, one can take $C := \cot \varepsilon + 8/\sin \varepsilon$).

Proof. We denote by H (resp. V) the set of subvectors $(A_{q_k}, A_{q_k+1}, \dots, A_{q_{k+1}}) \subset (A_1, \dots, A_r)$ such that each line segment $[A_i A_{i+1}]$, $i = q_k, \dots, q_{k+1} - 1$ is ε -horizontal (resp. ε -vertical) with respect to x^1 axis and either $q_k = 1$ or the preceding line segment line $[A_{q_{k-1}} A_{q_k}]$ is ε -vertical (resp. ε -horizontal) with respect to x^1 axis. Consider the partition $1 = q_1 < q_2 < \dots < q_\sigma = r$ of the set $\{1, \dots, r\}$ such that each subvector $(A_{q_k}, A_{q_k+1}, \dots, A_{q_{k+1}})$, $k = 1, \dots, \sigma$, either belongs to H or to V .

For $(A_{q_k}, A_{q_k+1}, \dots, A_{q_{k+1}}) \in H$ by the assumption of the statement being proven the line segments of this polygonal line have alternating directions with respect to x^1 axis and hence by Corollary 5.11 we have

$$\ell_{x^1}(\{A_j\}_{j=q_k}^{q_{k+1}}) \leq \ell(\{A_j\}_{j=q_k}^{q_{k+1}}) \leq 4|A_{q_k} A_{q_k+1}|.$$

For $(A_{q_k}, A_{q_k+1}, \dots, A_{q_{k+1}}) \in V$, we just estimate

$$\ell_{x^1}(\{A_j\}_{j=q_k}^{q_{k+1}}) = \sum_{j=q_k}^{q_{k+1}-1} |A_j^\perp A_{j+1}^\perp| \leq \sum_{j=q_k}^{q_{k+1}-1} |A_j^\perp A_{j+1}^\perp| \cot \varepsilon = \ell_{(x^1)^\perp}(\{A_j\}_{j=q_k}^{q_{k+1}}) \cot \varepsilon.$$

We have now

$$(6.15) \quad \begin{aligned} \ell_{x^1}(A_1, \dots, A_r) &= \sum_{k=1}^{\sigma-1} \ell_{x^1}(A_{q_k}, \dots, A_{q_{k+1}}) \\ &= \sum_{\substack{k \in \{1, \dots, \sigma-1\}, \\ \{A_j\}_{j=q_k}^{q_{k+1}} \in V}} \ell_{x^1}(\{A_j\}_{j=q_k}^{q_{k+1}}) + \sum_{\substack{k \in \{1, \dots, \sigma-1\}, \\ \{A_j\}_{j=q_k}^{q_{k+1}} \in H}} \ell_{x^1}(\{A_j\}_{j=q_k}^{q_{k+1}}) \\ &\leq \cot \varepsilon \sum_{\substack{k \in \{1, \dots, \sigma-1\}, \\ \{A_j\}_{j=q_k}^{q_{k+1}} \in V}} \ell_{(x^1)^\perp}(\{A_j\}_{j=q_k}^{q_{k+1}}) + 4 \sum_{\substack{k \in \{1, \dots, \sigma-1\}, \\ \{A_j\}_{j=q_k}^{q_{k+1}} \in H}} |A_{q_k} A_{q_k+1}|. \end{aligned}$$

For each $k \in \{1, \dots, \sigma-1\}$ such that $(A_{q_k}, \dots, A_{q_{k+1}}) \in H$ except $k = 1$ we estimate

$$\begin{aligned} |A_{q_k} A_{q_k+1}| &\leq |A_{q_{k-1}} A_{q_k}| + |A_{q_k} A_{q_k+1}| \leq \frac{1}{\sin \varepsilon} \left(|A_{q_{k-1}}^\perp A_{q_k}^\perp| + |A_{q_k}^\perp A_{q_k+1}^\perp| \right) \\ &\leq \frac{1}{\sin \varepsilon} \left(2|A_{q_{k-1}}^\perp A_{q_k}^\perp| + |A_{q_k}^\perp A_{q_k+1}^\perp| \right) \leq \frac{2}{\sin \varepsilon} \left(|A_{q_{k-1}}^\perp A_{q_k}^\perp| + |A_{q_k}^\perp A_{q_k+1}^\perp| \right), \end{aligned}$$

and if $(A_{q_1}, \dots, A_{q_2}) = (A_1, \dots, A_{q_2}) \in H$, then just

$$|A_{q_1} A_{q_1+1}| = |A_1 A_2|.$$

Plugging this into (6.15), we get

$$\begin{aligned}
\ell_{x^1} \left(\{A_j\}_{j=1}^r \right) &\leq \cot \varepsilon \sum_{\substack{k \in \{1, \dots, \sigma-1\}, \\ \{A_j\}_{j=q_k}^{q_{k+1}} \in V}} \sum_{j=q_k}^{q_{k+1}-1} |A_{j+1}^\perp A_j^\perp| + \\
&\quad \frac{8}{\sin \varepsilon} \sum_{\substack{k \in \{2, \dots, \sigma-1\}, \\ \{A_j\}_{j=q_k}^{q_{k+1}} \in H}} \left(|A_{q_k-1}^\perp A_{q_k}^\perp| + |A_{q_k}^\perp A_{q_k+1}^\perp| \right) + |A_1 A_2| \\
&\leq \left(\cot \varepsilon + \frac{8}{\sin \varepsilon} \right) \sum_{\substack{k \in \{1, \dots, \sigma-1\}, \\ \{A_j\}_{j=q_k}^{q_{k+1}} \in V}} \sum_{j=q_k}^{q_{k+1}-1} |A_{j+1}^\perp A_j^\perp| + \\
&\quad \frac{8}{\sin \varepsilon} \sum_{\substack{k \in \{2, \dots, \sigma-1\}, \\ \{A_j\}_{j=q_k}^{q_{k+1}} \in H}} |A_{q_k}^\perp A_{q_k+1}^\perp| + |A_1 A_2|,
\end{aligned}$$

because $[A_{q_k-1} A_{q_k}]$ is ε -vertical with respect to x^1 axis for $\{A_j\}_{j=q_k}^{q_{k+1}} \in H$. Hence

$$\ell_{x^1} \left(\{A_j\}_{j=1}^r \right) \leq \left(\cot \varepsilon + \frac{8}{\sin \varepsilon} \right) \ell_{(x^1)^\perp} (A_1, \dots, A_r) + |A_1 A_2|$$

as claimed, concluding the proof. \square

6.1.4. *Estimate of $\ell(A_1, \dots, A_r)$.* Finally we are able to prove Lemma 6.4 providing the estimate on the total variation of (A_1, \dots, A_r) .

Proof of Lemma 6.4. Plugging (6.10) (Corollary 6.10) into (6.6) (Lemma 6.8), we get

$$\ell_{x^j} (A_1, \dots, A_r) \leq (2 + 4C_2 \tan \delta) |A_1 A_r| + 4C_1 \tan \delta \sum_{i=2}^n \ell_{x^i} (A_1, \dots, A_r), \quad j = 2, \dots, r,$$

where C_1 and C_2 are as in Corollary 6.10, i.e. $C_1 := (3 \cot \varepsilon_1 + 8 / \sin \varepsilon_1) C(\xi)$ and $C_2 := \text{diam } \mathbb{B}$, where \mathbb{B} is the closed unit ball of $\|\cdot\|$. We may now apply Lemma 6.7 with

$$\begin{aligned}
L_0 &:= (2 + 4C_2 \tan \delta) |A_1 A_r|, \\
L_j &:= \ell_{x^j} (A_1, \dots, A_r),
\end{aligned}$$

$i := 2$ and $C := 4C_1 \tan \delta$ (recalling $\tan \delta < 1 / (8(n-1)C_1)$ under conditions of the statement being proven) to get

$$\ell_{x^j} (A_1, \dots, A_r) \leq (4 + 8C_2 \tan \delta) |A_1 A_r|, \quad j = 2, \dots, r,$$

and plugging the latter estimate back into (6.10), we get

$$\ell_{x^1} (A_1, \dots, A_r) \leq (C_1(n-1)(4 + 8C_2 \tan \delta) + C_2) |A_1 A_r|,$$

which concludes the proof. \square

6.2. Inductive step. We prove now the following statement that will serve as an inductive step.

Lemma 6.13. *Assume that*

$$\delta \in \left(0, \bar{\delta} \wedge \arctan \frac{\sin \varepsilon_0}{8(n-1)C(\xi)} \right),$$

where $\varepsilon_0 > 0$ is defined in Lemma 5.5, and suppose that the following inductive hypothesis holds: if for some $i \in \{2, \dots, n-1\}$ there exists a constant $C_{i-1} > 0$ such that whenever the $(n-i+2)$ -tuple $(\mathbb{P}_{\alpha_{i-1}}, \dots, \mathbb{P}_{\alpha_n})$ is admissible, the vector $(A_1, \dots, A_r, A_{r+1}, \dots, A_{r+n-i+1})$ is self-contracted with respect to the norm $\|\cdot\|$ and $(A_1, \dots, A_r) \subset \mathbb{P}_{\alpha_j} + A_{r+n-j}$ for all $j = i-1, \dots, n$, then

$$(6.16) \quad \ell(A_1, \dots, A_r) \leq C_{i-1} |A_1 A_r|.$$

Then this property holds also for $i+1$, i.e. there exists a constant $C_i > 0$ (depending only on the norm $\|\cdot\|$, on C_{i-1} , on n , δ and ξ) such that whenever the $(n-i+1)$ -tuple $(\mathbb{P}_{\alpha_i}, \dots, \mathbb{P}_{\alpha_n})$ is admissible, the vector $(A_1, \dots, A_r, A_{r+1}, \dots, A_{r+n-i})$ is self-contracted with respect to the norm $\|\cdot\|$ and $(A_1, \dots, A_r) \subset \mathbb{P}_{\alpha_j} + A_{r+n-j}$ for all $j = i, \dots, n$, then

$$(6.17) \quad \ell(A_1, \dots, A_r) \leq C_i |A_1 A_r|.$$

Proof. Let the n -tuple of sets $(\mathbb{P}_{\alpha_i}, \dots, \mathbb{P}_{\alpha_n})$ with $\alpha_j \in \{1, \dots, N\}$, $j = i, \dots, n$, be admissible, the vector $(A_j)_{j=1}^{r+n-i}$ be self-contracted with respect to the norm $\|\cdot\|$ and $(A_1, \dots, A_r) \subset \mathbb{P}_{\alpha_j} + A_{r+n-j}$ for all $j = i, \dots, n$. Let x^j be the axis in the direction ν^{α_j} determined by \mathbb{P}_{α_j} passing through A_r , and consider the $(i-1)$ -dimensional linear subspace $\Pi^{i-1} := (\text{span} \{\nu^{\alpha_j}\}_{j=i}^n)^\perp$. The rest of the proof will be organized in several steps.

STEP 1. We act similarly to the proof of Lemma 6.9. Namely, starting from the last line segment $[A_{k-1}A_k]$ with $1 < k \leq r$ which is ε_0 -horizontal with respect to Π^{i-1} (i.e. with maximum $k \in \{2, \dots, r\}$ such that $[A_{k-1}A_k]$ is ε_0 -horizontal with respect to this subspace), if it exists, we find the minimum $q \in \{1, \dots, k-1\}$ such that for every $j \in \{q, \dots, k-1\}$ the line segment $[A_jA_k]$ is ε_0 -horizontal with respect to Π^{i-1} . Note that in this way, if $q > 1$, then $[A_{q-1}A_k]$ is ε_0 -vertical with respect to Π^{i-1} . Now we repeat the same operation with $q-1$ instead of r , and continue in this way by backward induction as far as possible. In this way we find a finite (possibly empty) sequence of disjoint subintervals $\{q_l, q_l+1, \dots, k_l\}_{l=1}^\nu$ of $\{1, \dots, r\}$ such that for every $j \in \{q_l, \dots, k_l-1\}$ the line segment $[A_jA_{k_l}]$ is ε_0 -horizontal with respect to Π^{i-1} , while $[A_{q_l-1}A_{k_l}]$ is ε_0 -vertical with respect to this subspace (if $q_l > 1$).

We claim that

$$(6.18) \quad \ell(A_{q_l}, \dots, A_{k_l}) \leq \bar{C}_1 \sum_{\substack{\mathbb{P}_{\alpha_{i-1}} : (\mathbb{P}_{\alpha_{i-1}}, \mathbb{P}_{\alpha_i}, \dots, \mathbb{P}_{\alpha_n}) \\ \text{admissible}}} \ell((A_{q_l}, \dots, A_{k_l}) \cap (\mathbb{P}_{\alpha_{i-1}} + A_{k_l})) + \bar{C}_2 |A_{q_l} A_{k_l}|$$

for all $l = 1, \dots, \nu$, where $\bar{C}_1 > 0$ depends only on the norm $\|\cdot\|$, and $\bar{C}_2 > 0$ depends on the norm and on δ . To show this claim, consider an arbitrary $j \in \{q_l, \dots, k_l-1\}$ such that $A_{j+1} \in \mathbb{P}_{\alpha_{i-1}} + A_{k_l}$, but $A_j \notin \mathbb{P}_{\alpha_{i-1}} + A_{k_l}$ for some $\mathbb{P}_{\alpha_{i-1}}$ such that $(\mathbb{P}_{\alpha_{i-1}}, \mathbb{P}_{\alpha_i}, \dots, \mathbb{P}_{\alpha_n})$ is admissible. Then either

- (i) j is the first index in $\{q_l, \dots, k_l\}$ such that $A_{j+1} \in \mathbb{P}_{\alpha_{i-1}} + A_{k_l}$, i.e.

$$\{s \in \{q_l, \dots, j\} : A_s \in \mathbb{P}_{\alpha_{i-1}} + A_{k_l}\} = \emptyset,$$

in which case we just use $(A_j, A_{j+1}) \subset (A_{q_l}, \dots, A_{k_l})$ to estimate $|A_j A_{j+1}| \leq C |A_{q_l} A_{k_l}|$ by Remark 5.9 for some $C > 0$ depending only on $\|\cdot\|$; the sum of Euclidean lengths

of all such line segments $|A_j A_{j+1}|$ through all $\mathbb{P}_{\alpha_{i-1}}$ such that $(\mathbb{P}_{\alpha_{i-1}}, \mathbb{P}_{\alpha_i}, \dots, \mathbb{P}_{\alpha_n})$ is admissible, is estimated therefore from above by $\bar{C}_2 |A_{q_l} A_{k_l}|$, where $\bar{C}_2 := CN(\delta)$;

(ii) or there is an

$$s(j) := \max\{s \in \{q_l, \dots, j\} : A_s \in \mathbb{P}_{\alpha_{i-1}} + A_{k_l}\},$$

and $s(j) < j$ by the definition of $s(\cdot)$, hence $(A_j, A_{j+1}) \subset (A_{s(j)}, \dots, A_{j+1})$ which implies $|A_j A_{j+1}| \leq C |A_{s(j)} A_{j+1}|$ again by Remark 5.9 for $C > 0$ depending only on $\|\cdot\|$ (same as C in (i)). Therefore, with $\bar{C}_1 := C \vee 1$ one has

$$\begin{aligned} & \sum_{\substack{j \in \{q_l, \dots, k_l-1\} \\ \{A_j, A_{j+1}\} \subset \mathbb{P}_{\alpha_{i-1}} + A_{k_l}}} |A_j A_{j+1}| + \sum_{\substack{j \in \{q_l, \dots, k_l-1\} \\ \text{as in (ii)}}} |A_j A_{j+1}| \\ & \leq \sum_{\substack{j \in \{q_l, \dots, k_l-1\} \\ \{A_j, A_{j+1}\} \subset \mathbb{P}_{\alpha_{i-1}} + A_{k_l}}} |A_j A_{j+1}| + C \sum_{\substack{j \in \{q_l, \dots, k_l-1\} \\ \text{as in (ii)}}} |A_{s(j)} A_{j+1}| \\ & \leq \bar{C}_1 \left(\sum_{\substack{j \in \{q_l, \dots, k_l-1\} \\ \{A_j, A_{j+1}\} \subset \mathbb{P}_{\alpha_{i-1}} + A_{k_l}}} |A_j A_{j+1}| + \sum_{\substack{j \in \{q_l, \dots, k_l-1\} \\ \text{as in (ii)}}} |A_{s(j)} A_{j+1}| \right) \\ & = \bar{C}_1 \ell((A_{q_l}, \dots, A_{k_l}) \cap (\mathbb{P}_{\alpha_{i-1}} + A_{k_l})). \end{aligned}$$

From (i) and (ii) we get therefore (6.18).

STEP 2. By the inductive assumption for each $\mathbb{P}_{\alpha_{i-1}}$ with $(\mathbb{P}_{\alpha_{i-1}}, \mathbb{P}_{\alpha_i}, \dots, \mathbb{P}_{\alpha_n})$ admissible one has for $(A_j)_{j \in \Lambda_{k_l}} := (A_{q_l}, \dots, A_{k_l}) \cap (\mathbb{P}_{\alpha_{i-1}} + A_{k_l})$ (clearly, $\Lambda_{k_l} \subset \{q_l, q_l + 1, \dots, k_l\}$, and $k_l \in \Lambda_{k_l}$) the estimate

$$(6.19) \quad \ell((A_j)_{j \in \Lambda_{k_l}}) \leq C_{i-1} |A_{\tilde{q}_l} A_{k_l}|,$$

where \tilde{q}_l stands for the first index in Λ_{k_l} . But since $(A_j)_{j \in \Lambda_{k_l}} \subset (A_{q_l}, \dots, A_{k_l})$, then

$$|A_{\tilde{q}_l} A_{k_l}| \leq C |A_{q_l} A_{k_l}|$$

for some $C > 0$ depending only on the norm $\|\cdot\|$, and hence (6.19) implies $\ell((A_j)_{j \in \Lambda_{k_l}}) \leq C |A_{q_l} A_{k_l}|$. Therefore, from (6.18) we get

$$(6.20) \quad \ell(A_{q_l}, \dots, A_{k_l}) \leq C' |A_{q_l} A_{k_l}|$$

for all $l = 1, \dots, \nu$, where $C' := \bar{C}_1 C_{i-1} CN(\delta) + \bar{C}_2 > 0$ depends on δ and on $\|\cdot\|$, as well as on C_{i-1} .

STEP 3. Consider the subvector $(A_j)_{j \in \Lambda} \subset (A_1, \dots, A_r)$ obtained from (A_1, \dots, A_r) by canceling all the points A_j with $j \in \cup_{i=1}^{\nu} \{q_i + 1, \dots, k_i - 1\}$. The inequality (6.20) yields then, observing that clearly $C' > 1$, the estimate

$$(6.21) \quad \ell(A_1, \dots, A_r) \leq C' \ell((A_j)_{j \in \Lambda}).$$

To estimate the right-hand side of (6.21), we first note that by Lemma A.1

$$|A_{q_i-1} A_{q_i}| + |A_{q_i} A_{k_i}| \leq C |A_{q_i-1} A_{k_i}|$$

for a $C > 0$ depending only on $\|\cdot\|$, if $q_i > 1$, and thus for a subvector $(A_j)_{j \in \bar{\Lambda}} \subset (A_j)_{j \in \Lambda}$ obtained from $(A_j)_{j \in \Lambda}$ by canceling all A_{q_i} , $i = 1, \dots, \nu$ except possibly $q_i = \min \Lambda = 1$ (i.e. q_i

equal to the first index in Λ which is 1 by construction), and recalling that $\{q_i - 1, q_i, k_i\} \subset \Lambda$ when $q_i > 1$ again by construction, we get

$$(6.22) \quad \ell((A_j)_{j \in \Lambda}) \leq C \ell((A_j)_{j \in \tilde{\Lambda}}).$$

Thus, in view of (6.22) and (6.21) the proof will be concluded once we show that for some $\tilde{C} > 0$ depending possibly on ξ , hence on $\|\cdot\|$, as well as on n and i , one has

$$(6.23) \quad \ell((A_j)_{j \in \tilde{\Lambda}}) \leq \tilde{C} |A_{\min \tilde{\Lambda}} A_{\max \tilde{\Lambda}}| = \tilde{C} |A_1 A_r|,$$

the last equality being due to the fact that $\min \tilde{\Lambda} = 1$ and $\max \tilde{\Lambda} = r$ by construction.

STEP 4. It remains to prove (6.23). We will in fact show it with $\tilde{C} > 0$ depending possibly on ξ , hence just on $\|\cdot\|$. To this aim observe that all the segments of the polygonal line $(A_j)_{j \in \tilde{\Lambda}}$ except possibly the first one are ε_0 -vertical with respect to Π^{i-1} . Denoting for convenience $(\tilde{A}_1, \dots, \tilde{A}_\rho) := (A_j)_{j \in \tilde{\Lambda}}$, we have therefore that

$$(6.24) \quad \begin{aligned} \ell_{\Pi^{i-1}}((A_j)_{j \in \tilde{\Lambda}}) &\leq \ell((A_j)_{j \in \tilde{\Lambda}}) = |\tilde{A}_1 \tilde{A}_2| + \ell(\tilde{A}_2, \dots, \tilde{A}_\rho) \\ &\leq |\tilde{A}_1 \tilde{A}_2| + \frac{1}{\sin \varepsilon_0} \ell_{(\Pi^{i-1})^\perp}((A_j)_{j \in \tilde{\Lambda}}) \\ &\leq C |\tilde{A}_1 \tilde{A}_\rho| + \frac{1}{\sin \varepsilon_0} \ell_{(\Pi^{i-1})^\perp}((A_j)_{j \in \tilde{\Lambda}}) \quad \text{by Remark 5.9,} \end{aligned}$$

with a constant $C > 0$ depending only on $\|\cdot\|$ (here in the last inequality we used $(\tilde{A}_1, \tilde{A}_2) \subset (A_j)_{j \in \tilde{\Lambda}}$). But for each $j \in \{i, \dots, n\}$ one has

$$(6.25) \quad \begin{aligned} \ell_{x^j}((A_j)_{j \in \tilde{\Lambda}}) &\leq |\tilde{A}_1 \tilde{A}_\rho| + 2 \tan \delta \ell_{(x^j)^\perp}((A_j)_{j \in \tilde{\Lambda}}) \quad \text{by Lemma 6.6} \\ &\leq |\tilde{A}_1 \tilde{A}_\rho| + 2 \tan \delta \ell((A_j)_{j \in \tilde{\Lambda}}) \\ &\leq |\tilde{A}_1 \tilde{A}_\rho| + 2 \tan \delta \left(\ell_{\Pi^{i-1}}((A_j)_{j \in \tilde{\Lambda}}) + \ell_{(\Pi^{i-1})^\perp}((A_j)_{j \in \tilde{\Lambda}}) \right) \\ &\leq |\tilde{A}_1 \tilde{A}_\rho| + 2 \tan \delta \ell_{\Pi^{i-1}}((A_j)_{j \in \tilde{\Lambda}}) + 2C(\xi) \tan \delta \sum_{k=i}^n \ell_{x^k}((A_j)_{j \in \tilde{\Lambda}}), \end{aligned}$$

the latter inequality being due to Lemma 6.5. By Lemma 6.7 with

$$\begin{aligned} L_0 &:= |\tilde{A}_1 \tilde{A}_\rho| + 2 \tan \delta \ell_{\Pi^{i-1}}((A_j)_{j \in \tilde{\Lambda}}), \\ L_k &:= \ell_{x^k}((A_j)_{j \in \tilde{\Lambda}}) \end{aligned}$$

and $C := 2C(\xi) \tan \delta$, recalling that $\tan \delta < 1/(4(n-i+1)C(\xi))$ by assumption of the statement being proven, we obtain then from (6.25) the estimate

$$(6.26) \quad \sum_{j=i}^n \ell_{x^j}((A_j)_{j \in \tilde{\Lambda}}) \leq 2(n-i+1) |\tilde{A}_1 \tilde{A}_\rho| + 4(n-i+1) \tan \delta \ell_{\Pi^{i-1}}((A_j)_{j \in \tilde{\Lambda}}).$$

By Lemma 6.5 we have

$$(6.27) \quad \begin{aligned} \ell_{(\Pi^{i-1})^\perp}((A_j)_{j \in \tilde{\Lambda}}) &\leq C(\xi) \sum_{j=i}^n \ell_{x^j}((A_j)_{j \in \tilde{\Lambda}}) \\ &\leq 2(n-i+1)C(\xi) |\tilde{A}_1 \tilde{A}_\rho| + 4(n-i+1)C(\xi) \tan \delta \ell_{\Pi^{i-1}}((A_j)_{j \in \tilde{\Lambda}}), \end{aligned}$$

the latter inequality being due to (6.26). Plugging (6.27) into (6.24) yields

$$\ell_{\Pi^{i-1}}((A_j)_{j \in \tilde{\Lambda}}) \leq \left(C + \frac{2(n-i+1)C(\xi)}{\sin \varepsilon_0} \right) |\tilde{A}_1 \tilde{A}_\rho| + \frac{4(n-i+1)}{\sin \varepsilon_0} C(\xi) \tan \delta \ell_{\Pi^{i-1}}((A_j)_{j \in \tilde{\Lambda}}),$$

and hence, since $\tan \delta < \sin \varepsilon_0 / (8(n-i+1)C(\xi))$, one has

$$(6.28) \quad \ell_{\Pi^{i-1}}((A_j)_{j \in \tilde{\Lambda}}) \leq 2 \left(C + \frac{2(n-i+1)C(\xi)}{\sin \varepsilon_0} \right) |\tilde{A}_1 \tilde{A}_\rho|.$$

Finally, plugging (6.28) into (6.27) and recalling

$$4(n-i+1)C(\xi) \tan \delta \leq \frac{1}{2} \sin \varepsilon_0,$$

we get

$$\ell_{(\Pi^{i-1})^\perp}((A_j)_{j \in \tilde{\Lambda}}) \leq (4(n-i+1)C(\xi) + C \sin \varepsilon_0) |\tilde{A}_1 \tilde{A}_\rho|,$$

and which together with (6.28) gives (6.23) with $\tilde{C} := 3C + 4(n-i+1)C(\xi) (1 + 1/\sin \varepsilon_0)$ as claimed. \square

APPENDIX A. AUXILIARY LEMMATA

We used the following easy statements.

Lemma A.1. *If (A_1, A_2, A_3) is self-contracted with respect to the norm $\|\cdot\|$, then*

$$|A_1 A_2| + |A_2 A_3| \leq C |A_1 A_3|,$$

for some $C > 0$ depending only on $\|\cdot\|$.

Proof. In fact, $|A_2 A_3| \leq C |A_1 A_3|$ with C as in the statement, which together with the triangle inequality

$$|A_1 A_2| \leq |A_1 A_3| + |A_2 A_3|,$$

implies the claim. \square

For every couple of distinct points $\{A, B\} \subset \mathbb{R}^n$ denote by $M(A, B)$ the closed set

$$M(A, B) := \{z \in \mathbb{R}^n : \|A - z\| = \|B - z\|\}$$

(called *mediatrix* or *equidistant set* of $\{A, B\}$). Clearly, $M(\lambda A, \lambda B) = \lambda M(A, B)$ for all $\lambda \geq 0$ (in fact, even for all $\lambda \in \mathbb{R}$ if the norm is, as it is customary to assume, symmetric). Further, $M(A+x, B+x) = M(A, B)$. Observe also that $M(A, B) \cap (AB)$ is the midpoint C_0 of $[AB]$ if the norm is symmetric.

Lemma A.2. *There is a constant $\bar{\varepsilon} > 0$ depending only on the norm $\|\cdot\|$ such that for every $C \in M(A, B)$ with $\angle ABC \leq 2\bar{\varepsilon}$ one has*

$$|BC| \leq 3/4 |AB|.$$

Proof. Since the statement is invariant with respect to translation and scaling, we may assume without loss of generality that $|AB| = 1$ and B is the origin, so that $M(A, B)$ depends only on the direction $\nu \in S^{n-1}$ of the segment $[BA]$. Let $\varepsilon(\nu)$ stand for the maximum angle α such that for $C \in M(A, B)$ with $\angle ABC \leq \alpha$ one has $|BC| \leq 3/4$. It suffices to set now $\bar{\varepsilon} := \inf_{\nu \in S^{n-1}} \varepsilon(\nu)$ and observe that $\bar{\varepsilon} > 0$. In fact, otherwise there is a sequence $\{A_k\} \subset S^{n-1}$, $A_k \rightarrow A$, and $\{C_k\} \subset M(A_k, B)$, $C_k \rightarrow C \in \mathbb{R}^n$ for some $A \in S^{n-1}$ and $C \in \mathbb{R}^n$ with $\angle A_k B C_k \rightarrow 0$ as $k \rightarrow \infty$ and $|B C_k| > 3/4$. Clearly therefore $C \in M(A, B)$,

$|BC| \geq 3/4$ and $\angle ABC = 0$, hence $C \in (AB)$, which implies that C is the midpoint of the segment $[AB]$ and hence $|BC| = 1/2$, this contradiction concluding the proof. \square

Remark A.3. The proof of Lemma A.2 depends essentially on the fact that for $\{C\} := M(A, B) \cap (AB)$ one has $C = C_0$, the midpoint of $[AB]$. It is worth noting however that if the norm $\|\cdot\|$ is not assumed to be symmetric (i.e. one does not have $\|x\| = \|-x\|$ for all $x \in E$), then $M(A, B) \cap (AB)$ is still a singleton $\{C\}$, but it does not in general coincide with C_0 , and one only has

$$c|AB| \leq |AC| \leq (1 - c)|AB|$$

for some $c \in (0, 1)$ depending only on $\|\cdot\|$. Thus the claim of Lemma A.2 should be changed in this case to

$$|BC| \leq (1 - \bar{c})|AB|$$

for some $\bar{c} \in (0, 1)$ depending only on $\|\cdot\|$.

ACKNOWLEDGEMENTS

We thank Antoine Lemenant for introducing us the problem and checking our proof, and Joseph Gordon for careful reading of the manuscript and numerous useful comments.

REFERENCES

- [1] A. Daniilidis, G. David, E. Durand-Cartagena, and A. Lemenant. Rectifiability of self-contracted curves in the Euclidean space and applications. *J. Geometric Analysis*, 25(2):1211–1239, 2015.
- [2] A. Daniilidis, R. Deville, E. Durand-Cartagena, and L. Rifford. Self-contracted curves in Riemannian manifolds. 2014. Preprint. <http://cvgmt.sns.it/paper/2798/>.
- [3] A. Daniilidis, O. Ley, and S. Sabourau. Asymptotic behaviour of self-contracted planar curves and gradient orbits of convex functions. *J. de Mathématiques Pures et Appliquées*, 94(2):183–199, 2010.
- [4] A. Lemenant. Rectifiability of non Euclidean planar self-contracted curves. *Confluentes Math.*, 8(2):23–38, 2016.
- [5] M. Longinetti, P. Manselli, and A. Venturi. Bounding regions to plane steepest descent curves of quasiconvex families. *J. Appl. Math.*, Art. ID 4873276, 2016.
- [6] P. Manselli and C. Pucci. Maximum length of steepest descent curves for quasi-convex functions. *Geometriae Dedicata*, 38(2):211–227, 1991.

ST.PETERSBURG BRANCH OF THE STEKLOV MATHEMATICAL INSTITUTE OF THE RUSSIAN ACADEMY OF SCIENCES, FONTANKA 27, 191023 ST.PETERSBURG, RUSSIA AND DEPARTMENT OF MATHEMATICAL PHYSICS, FACULTY OF MATHEMATICS AND MECHANICS, ST. PETERSBURG STATE UNIVERSITY, UNIVERSITETSKIJ PR. 28, OLD PETERHOF, 198504 ST.PETERSBURG, RUSSIA AND ITMO UNIVERSITY

E-mail address: stepanov.eugene@gmail.com

CHEBYSHEV LABORATORY, ST. PETERSBURG STATE UNIVERSITY, 14TH LINE V.O., 29B, 199178 ST. PETERSBURG, RUSSIA